

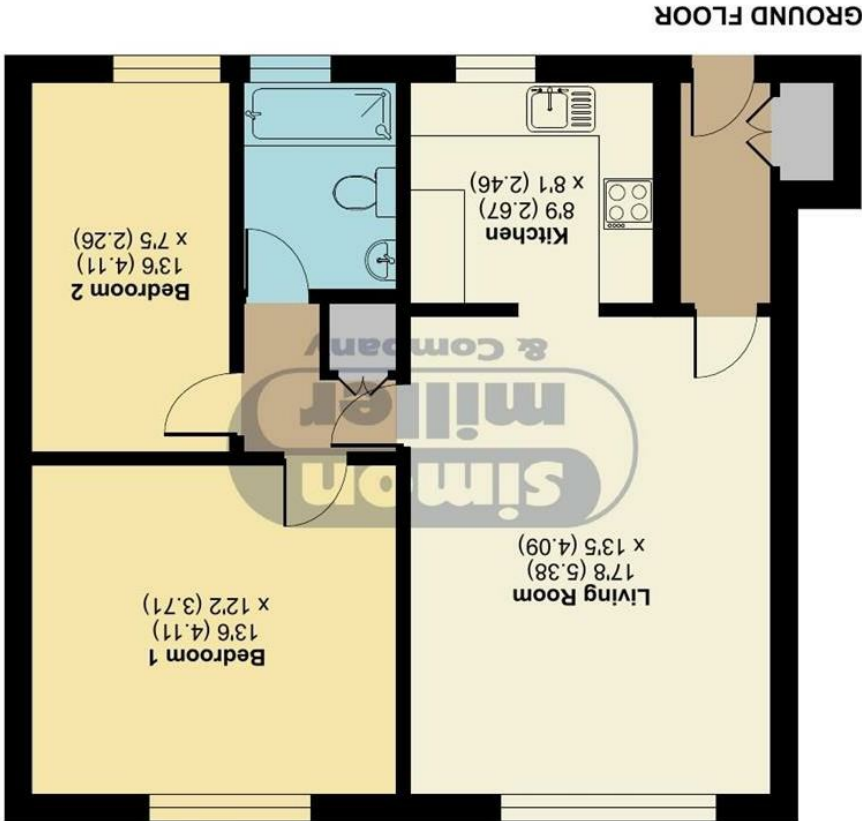


Flat 9, Pine Lodge Tonbridge Road, Maidstone,
ME16 8TA

Auction Guide £135,000
EPC RATING: C

Pine Lodge, Tonbridge Road, Maidstone, ME16

Approximate Area = 728 sq ft / 67.6 sq m
For identification only - Not to scale



GROUND FLOOR

Floor plan produced in accordance with RICS Property Measurement 2nd Edition, incorporating International Property Measurement Standards (IPMS2 Residential). © nchecom 2025. Produced for Simon Miller & Company. REF: 1324785



We love houses

TAKE A LOOK AT: WWW.SIMONMILLER.CO.UK





Being offered for sale by modern method of auction, situated on the desirable Tonbridge Road in Maidstone, this charming second-floor apartment offers a wonderful opportunity for both first-time buyers and investors alike. Spanning an impressive 728 square feet, the property features two well-proportioned bedrooms, a comfortable reception room, and a bathroom, providing ample space for modern living.

Constructed in 1965, this purpose-built apartment retains a classic appeal while presenting a canvas for personalisation. Although it requires some cosmetic improvements, this allows you to tailor the space to your own taste and style. The communal gardens offer a delightful outdoor area, perfect for relaxation or socialising with neighbours.

One of the standout features of this property is its convenient location. Situated within walking distance of Maidstone West Train Station, commuting to London or exploring the surrounding areas is both easy and efficient. Additionally, the apartment benefits from parking for one vehicle, a valuable asset in this bustling area.

Being chain-free, this property is ready for a swift transaction, making it an ideal choice for those looking to move quickly. With its blend of potential and practicality, this apartment on Tonbridge Road is a fantastic opportunity not to be missed. Whether you are seeking a new home or a sound investment, this property is sure to impress.

MATERIAL INFORMATION

Leasehold
Council Tax Band B
EPC Report C



• For Sale By Modern Method Of Auction • Starting Bid £135,000 • Chain Free • Second Floor Purpose Built Apartment • In Need Of Some Cosmetic Improvement • Communal Gardens • Popular & Sought After Barming Location • Walking Distance From Maidstone West Train Station

Agents Note: All dimensions are approximate and quoted for guidance only. Reference to appliances, fixtures, fittings and services does not imply that they are necessarily in good condition, fit the purpose or are in working order. Interested parties are advised to obtain verification from their Solicitors as to the Freehold/Leasehold status of the property and confirmation regarding the condition of any fixtures and fittings included in the sale.

11, COLMAN HOUSE, MAIDSTONE, KENT, ME14 1DJ | 01622 691255 | MAIDSTONESALES@SIMONMILLER.CO.UK