



Flat 2, Gower House Canning Street, Maidstone, ME14 2RY

Guide Price £170,000
EPC RATING: C

Gower House, Canning Street, Maidstone, ME14

Approximate Area = 504 sq ft / 46.8 sq m
For identification only - Not to scale



Floor plan produced in accordance with RICS Property Measurement 2nd Edition. © ncthemcom 2025. Produced for Simon Miller & Company. REF: 1317038



TAKE A LOOK AT: WWW.SIMONMILLER.CO.UK





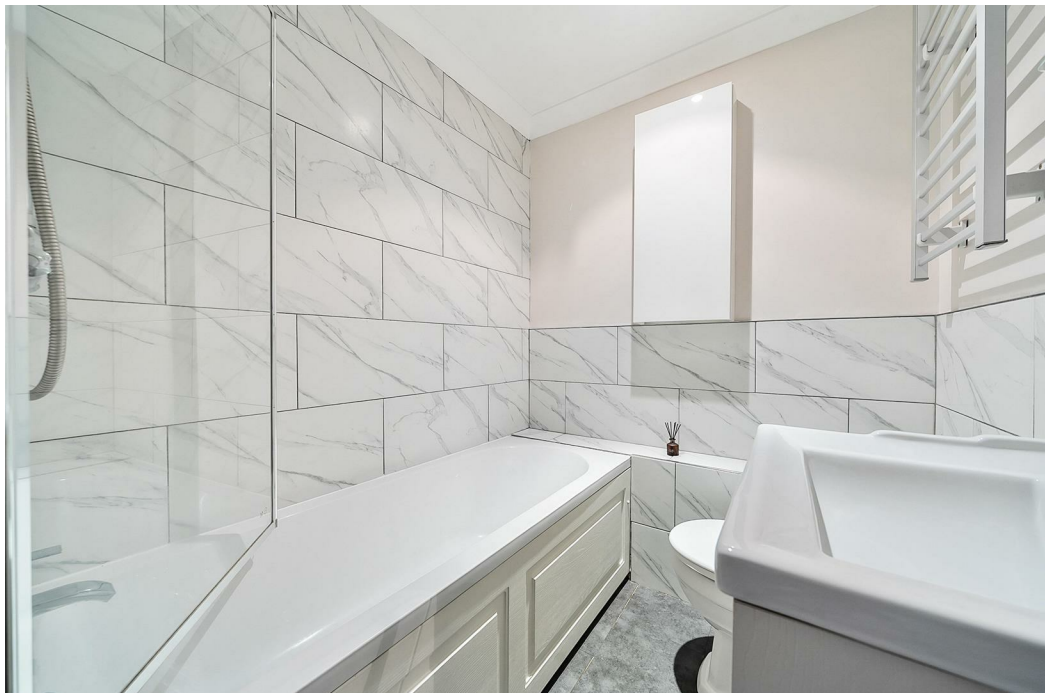
Located on Canning Street in the heart of Maidstone, is this two-bedroom ground floor apartment. Spanning an inviting 504 square feet, the property boasts a well-designed open plan kitchen and living space.

The apartment is beautifully presented throughout that enhance its appeal. With two bedrooms, it is an ideal choice for first-time buyers.

One of the standout features of this property is the allocated parking space, providing ease and security for your vehicle. Additionally, the location is superb, with local amenities just a stone's throw away, making daily errands a breeze. For commuters, Maidstone East Train Station is conveniently close, offering excellent transport links to London and beyond.

MATERIAL INFORMATION

Leasehold - Share of Freehold
Council Tax Band B
EPC Report C



• GUIDE PRICE £170,000 - £180,000 • Two Bedroom Ground Floor Apartment • Open Plan Kitchen/ Living Space • Allocated Parking • Beautifully Presented Throughout • Ideal First Time Buy • Close To Local Amenities • Close To Maidstone East Train Station

Agents Note: All dimensions are approximate and quoted for guidance only. Reference to appliances, fixtures, fittings and services does not imply that they are necessarily in good condition, fit the purpose or are in working order. Interested parties are advised to obtain verification from their Solicitors as to the Freehold/Leasehold status of the property and confirmation regarding the condition of any fixtures and fittings included in the sale.

11, COLMAN HOUSE, MAIDSTONE, KENT, ME14 1DJ | 01622 691255 | MAIDSTONESALES@SIMONMILLER.CO.UK