



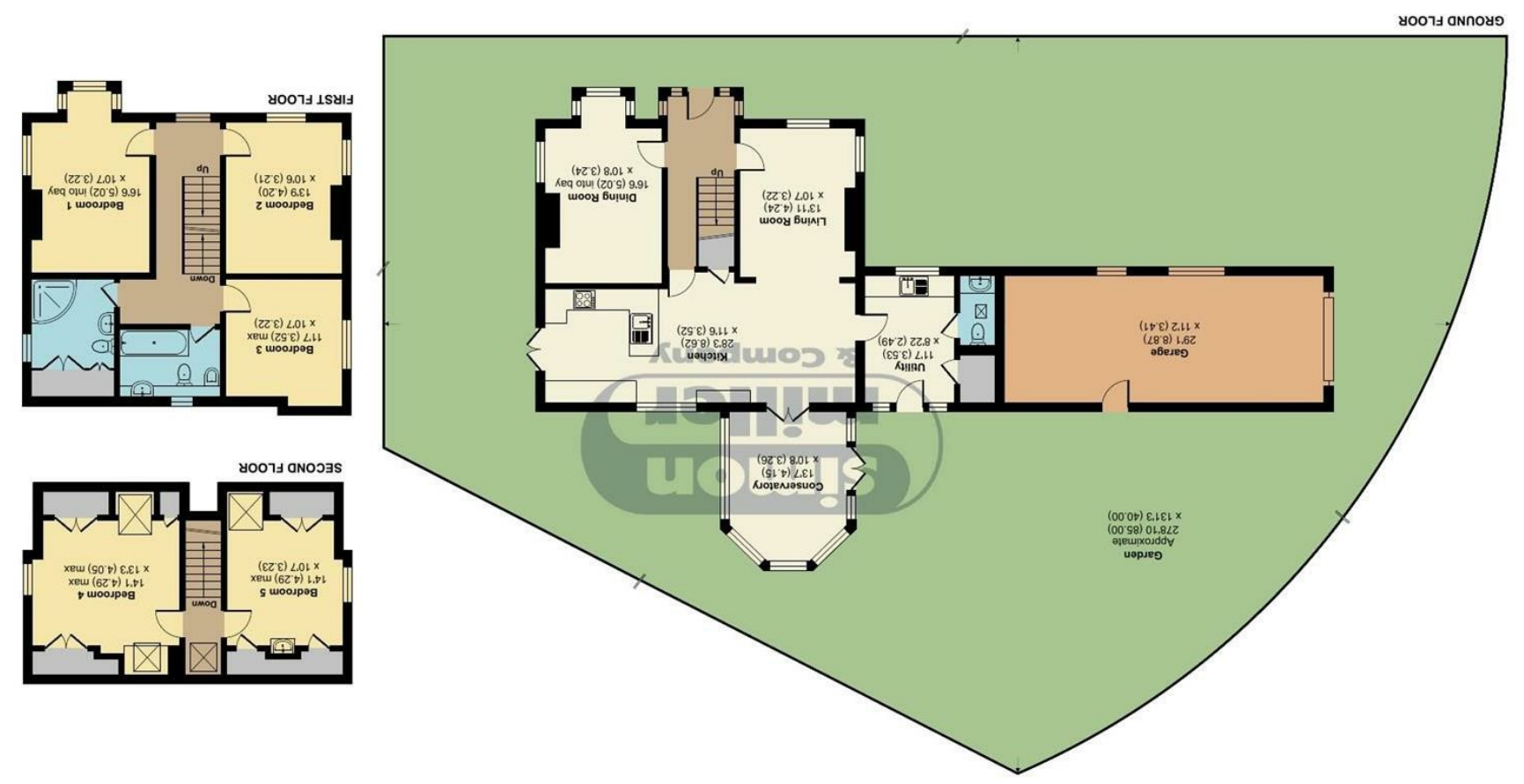
Inglewood Gallants Lane, East Farleigh, ME15 0LG

Guide Price £900,000

EPC RATING: E

Gallants Lane, East Farleigh, Maidstone, ME15

Approximate Area = 2200 sq ft / 204.3 sq m
Garage= 337 sq ft / 31.3 sq m
Total = 2537 sq ft / 235.6 sq m
For identification only - Not to scale



Floor plan produced in accordance with RICS Property Measurement 2nd Edition. © ncthemcom 2025. Produced for Simon Miller & Company. REF: 1340353



Located in the charming village of East Farleigh, this splendid five-bedroom detached Edwardian family home offers a perfect blend of character and modern living. Spanning an impressive 2,537 square feet, the property boasts two spacious reception rooms, ideal for both entertaining guests and enjoying family time. The heart of the home is undoubtedly the large open-plan kitchen, which flows seamlessly into a lovely conservatory, providing a bright and airy space to relax and unwind.

The property features two well-appointed bathrooms, ensuring ample facilities for a growing family. With beautiful character features throughout, this home exudes warmth and charm, making it a delightful place to reside. The generous plot, approximately one acre in size, presents an exciting opportunity for potential extension and enhancement, subject to obtaining the necessary planning permissions.

Parking will never be an issue here, as the property offers off-street parking for up to eight vehicles, complemented by a large double garage. This is a rare find in such a desirable location, where convenience meets tranquility.

East Farleigh is a popular area, known for its picturesque surroundings and community spirit, making it an ideal setting for families. This property is not just a house; it is a home where memories can be made for years to come. If you are seeking a spacious family residence with character and potential, this Edwardian gem on Gallants Lane is not to be missed.

MATERIAL INFORMATION

Freehold
Council Tax Band G
EPC Report E



• GUIDE PRICE £900,000 - £1,000,000 • Five Bedroom Detached Edwardian Family Home • Two Reception Rooms With Large Open Plan Kitchen • Lovely Conservatory/Useful Utility Room & Downstairs WC • Family Bathroom & Seperate Shower Room • Large Double Garage And Off Street Parking For Multiple Vehicles • Beautiful Character Features Throughout • Large Plot Approximately 1 Acre • Potential To Extend And Enhance The Home Subject To Planning Permission Being Obtainable • Popular East Farleigh Location
Agents Note: All dimensions are approximate and quoted for guidance only. Reference to appliances, fixtures, fittings and services does not imply that they are necessarily in good condition, fit the purpose or are in working order. Interested parties are advised to obtain verification from their Solicitors as to the Freehold/Leasehold status of the property and confirmation regarding the condition of any fixtures and fittings included in the sale.

11, COLMAN HOUSE, MAIDSTONE, KENT, ME14 1DJ | 01622 691255 | MAIDSTONESALES@SIMONMILLER.CO.UK