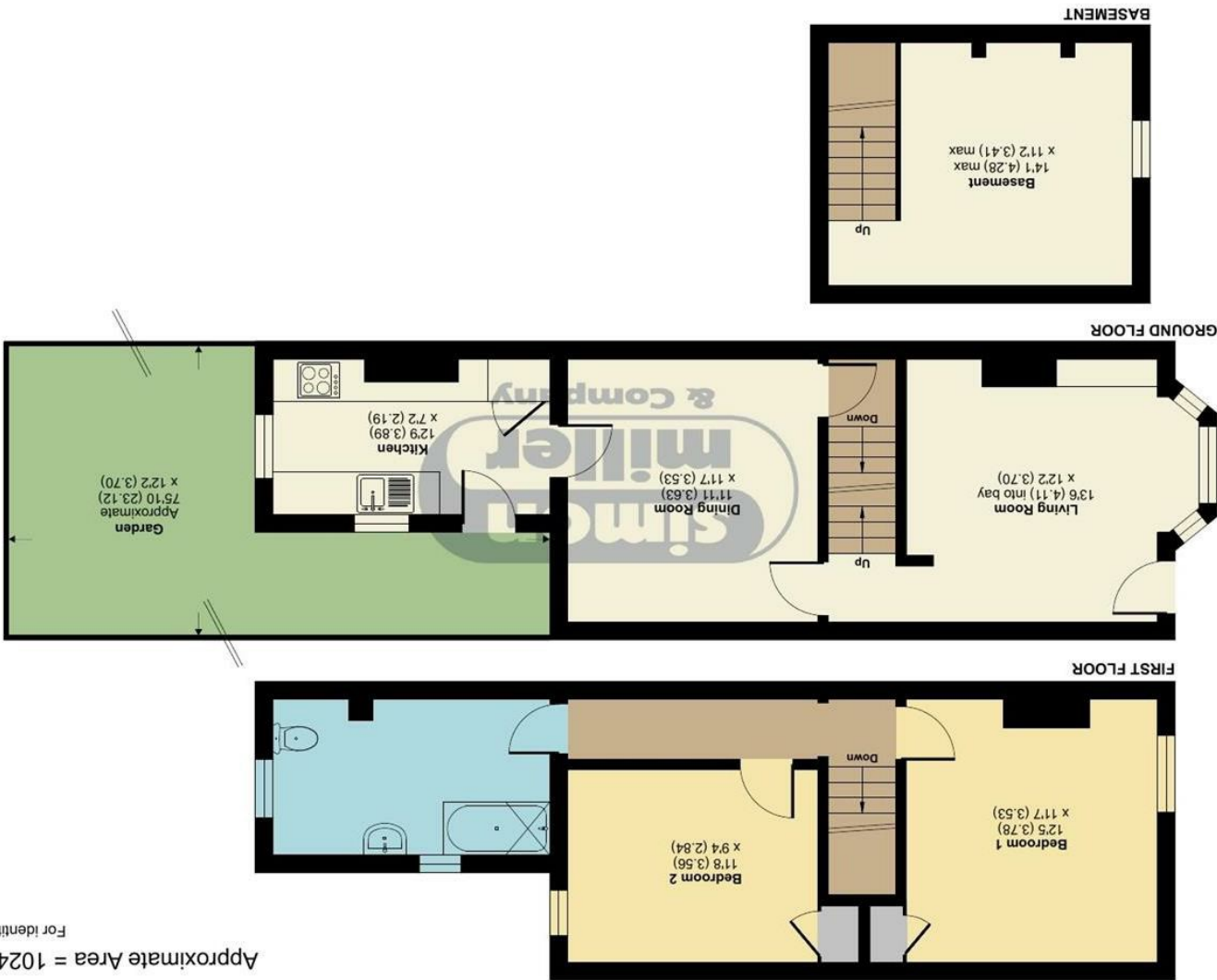


Produced for Simon Miller & Company. REF: 1335557  
Incorporating International Property Measurement Standards (IPMS2 Residential). © nchecom 2025.



Charlton Street, Maidstone, ME16

Approximate Area = 1024 sq ft / 95.1 sq m

For identification only - Not to scale

60 Charlton Street, Maidstone, ME16 8LA

Asking Price £270,000

EPC RATING: D





Located in the charming area of Barming, Maidstone, this delightful Victorian end-terrace home, offers a perfect blend of character and modern living. Spanning an impressive 1,024 square feet, the property boasts two spacious reception rooms, providing ample space for relaxation and entertaining.

The two well-proportioned bedrooms are ideal for a small family or professionals seeking a comfortable living environment. The upstairs bathroom is generously sized, ensuring convenience for all residents. One of the standout features of this home is the useful basement, which presents an excellent opportunity for additional storage or potential conversion, depending on your needs.

The large rear garden, approximately 75 feet in length, is a true gem, offering a private outdoor space perfect for gardening, play, or simply enjoying the fresh air.

This property is chain-free, making it an attractive option for those looking to move in without delay. Its sought-after location provides easy access to Maidstone town centre, where you can enjoy a variety of shops, restaurants, and local amenities.

In summary, this charming two-bedroom end-terrace home on Charlton Street is a wonderful opportunity for anyone looking to settle in a vibrant community while enjoying the comforts of a spacious and characterful property.

**MATERIAL INFORMATION**

**Freehold**  
**Council Tax Band B**  
**EPC Report D**



- CHAIN FREE • Two Bedroom End Terraced Home • Two Reception Rooms • Large Rear Garden Approx 75ft • Useful Basement • Good Size Upstairs Bathroom • Sought After Barming Location • Easy Access To Maidstone Town Center & Transport Links

Agents Note: All dimensions are approximate and quoted for guidance only. Reference to appliances, fixtures, fittings and services does not imply that they are necessarily in good condition, fit the purpose or are in working order. Interested parties are advised to obtain verification from their Solicitors as to the Freehold/Leasehold status of the property and confirmation regarding the condition of any fixtures and fittings included in the sale.

11, COLMAN HOUSE, MAIDSTONE, KENT, ME14 1DJ | 01622 691255 | MAIDSTONESALES@SIMONMILLER.CO.UK