



Pine Grove

Penenden Heath, Maidstone ME14 2AJ

- Five Bedroom Semi-Detached Victorian Family Home
- Wealth Of Character Features Throughout
- Utility Room, Conservatory & Downstairs WC
- Balcony To Bedroom Five
- Landscaped Mature Rear Garden
- Beautifully Presented Throughout
- Dual Reception
- Two Bathrooms To First Floor Including Marble Tiled En Suite
- No Through Road
- Popular & Sought After Penenden Heath Location

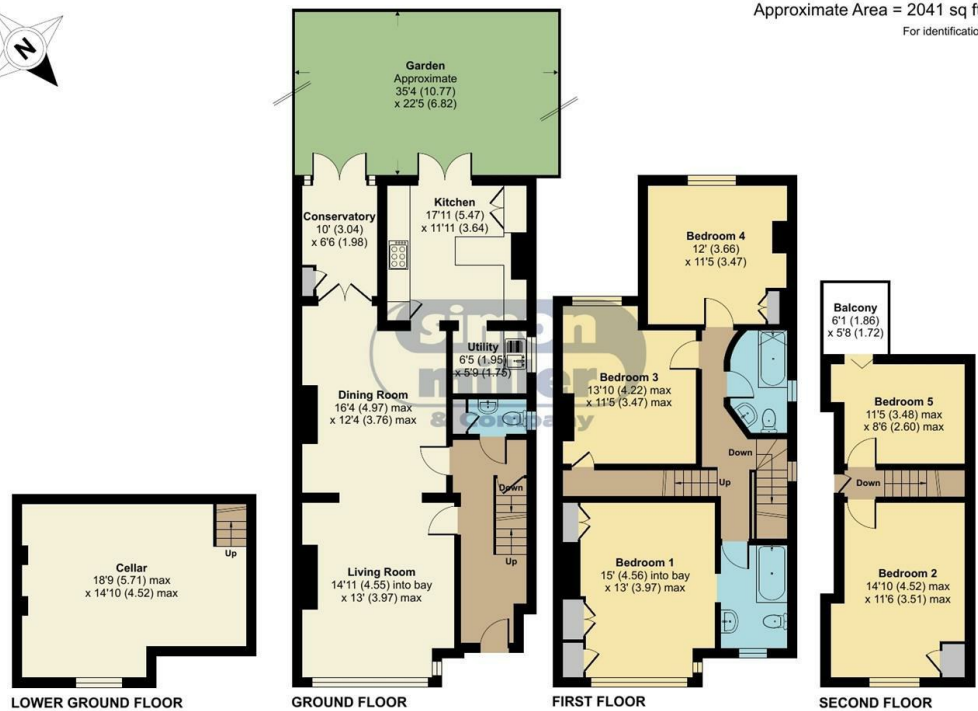
Price Guide £550,000 Freehold

Local Authority
Council Tax Band F
EPC Rating D



Pine Grove, Maidstone, ME14

Approximate Area = 2041 sq ft / 189.6 sq m
For identification only - Not to scale



Floor plan produced in accordance with RICS Property Measurement 2nd Edition, incorporating International Property Measurement Standards (IPMS2 Residential). © nichecom 2025. Produced for Simon Miller & Company. REF: 1347268



Maidstone & The Weald Office
11 Colman House, Colman Parade, King
Street, Maidstone, Kent, ME14 1DJ

Contact
01622 691255
maidstonesales@simonmiller.co.uk

Agents Note: Whilst every care has been taken to prepare these particulars, they are for guidance purposes only. All measurements are approximate and for general guidance purposes only and whilst every care has been taken to ensure accuracy, they should not be relied upon and potential buyers/tenants are advised to recheck the measurements.