



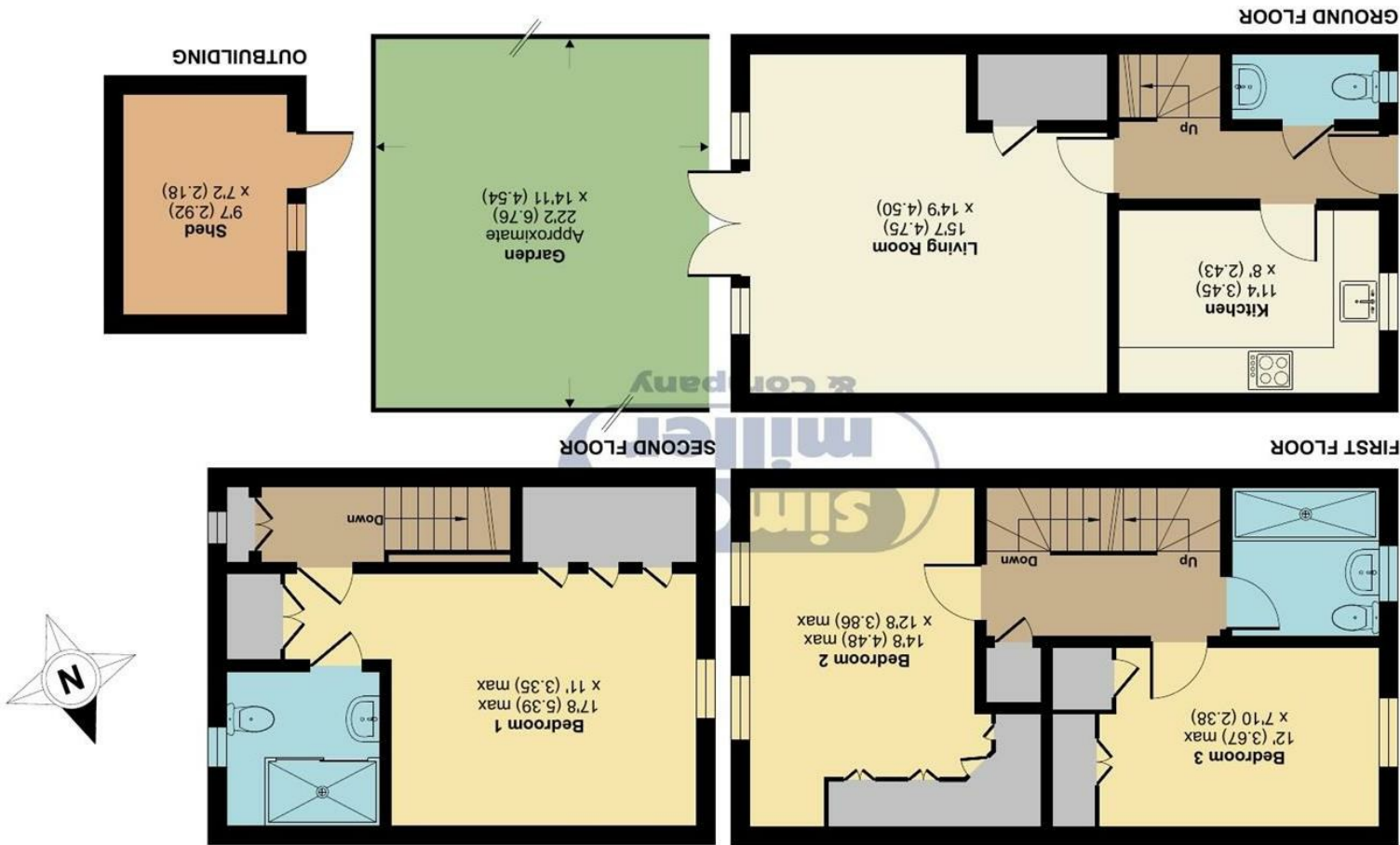
73 Queen Elizabeth Square, Maidstone, ME15 9DA

Guide Price £375,000
EPC RATING: C

Queen Elizabeth Square, Maidstone, ME15

Approximate Area = 1110 sq ft / 103.1 sq m
Outbuilding = 69 sq ft / 6.4 sq m
Total = 1179 sq ft / 109.5 sq m

For identification only - Not to scale



Floor plan produced in accordance with RICS Property Measurement 2nd Edition.
Incorporating International Property Measurement Standards (IPMS2 Residential). © nchecom 2025.
Produced for Simon Miller & Company. REF: 1355627

TAKE A LOOK AT: WWW.SIMONMILLER.CO.UK

We love houses

APPROVED CODE
TRADING STANDARDS GOV.UK

The Property Ombudsman



Located in the desirable Queen Elizabeth Square of Maidstone, this beautifully presented three-bedroom end terrace family home offers a perfect blend of modern living and convenience. Built between 2010 and 2019, the property boasts accommodation spread over three well-designed floors, ensuring ample space for family life.

As you enter, you are greeted by a welcoming atmosphere that flows throughout the home. The ground floor features a convenient WC, making it ideal for guests and family alike. The low maintenance rear garden provides a lovely outdoor space for relaxation or entertaining, without the burden of extensive upkeep.

The first floor hosts two generously sized bedrooms, perfect for children or guests, along with a family bathroom that caters to the needs of the household. Ascending to the second floor, you will discover the master bedroom, a true retreat that includes an en-suite bathroom and a dressing area, offering both privacy and comfort.

This property is ideally located with easy access to Maidstone town centre, where you will find a variety of shops, restaurants, and local amenities. Additionally, it is in close proximity to popular schools, making it an excellent choice for families.

MATERIAL INFORMATION

Freehold
Council Tax Band D
EPC Report C



• GUIDE PRICE £375,000 - £400,000 • Three Bedroom End Terrace Family Home With Allocated Parking Space • Accommodation Split Over Three Floors • Beautifully Presented Throughout • Family Bathroom • Master Bedroom To Include En-Suite And Dressing Area Taking Up The Whole Of The Second Floor • Groundfloor WC • Low Maintenance Rear Garden • Easy Access To Maidstone Town Center And All Local Amenities • Close To Popular Schools

Agents Note: All dimensions are approximate and quoted for guidance only. Reference to appliances, fixtures, fittings and services does not imply that they are necessarily in good condition, fit the purpose or are in working order. Interested parties are advised to obtain verification from their Solicitors as to the Freehold/Leasehold status of the property and confirmation regarding the condition of any fixtures and fittings included in the sale.

11, COLMAN HOUSE, MAIDSTONE, KENT, ME14 1DJ | 01622 691255 | MAIDSTONESALES@SIMONMILLER.CO.UK