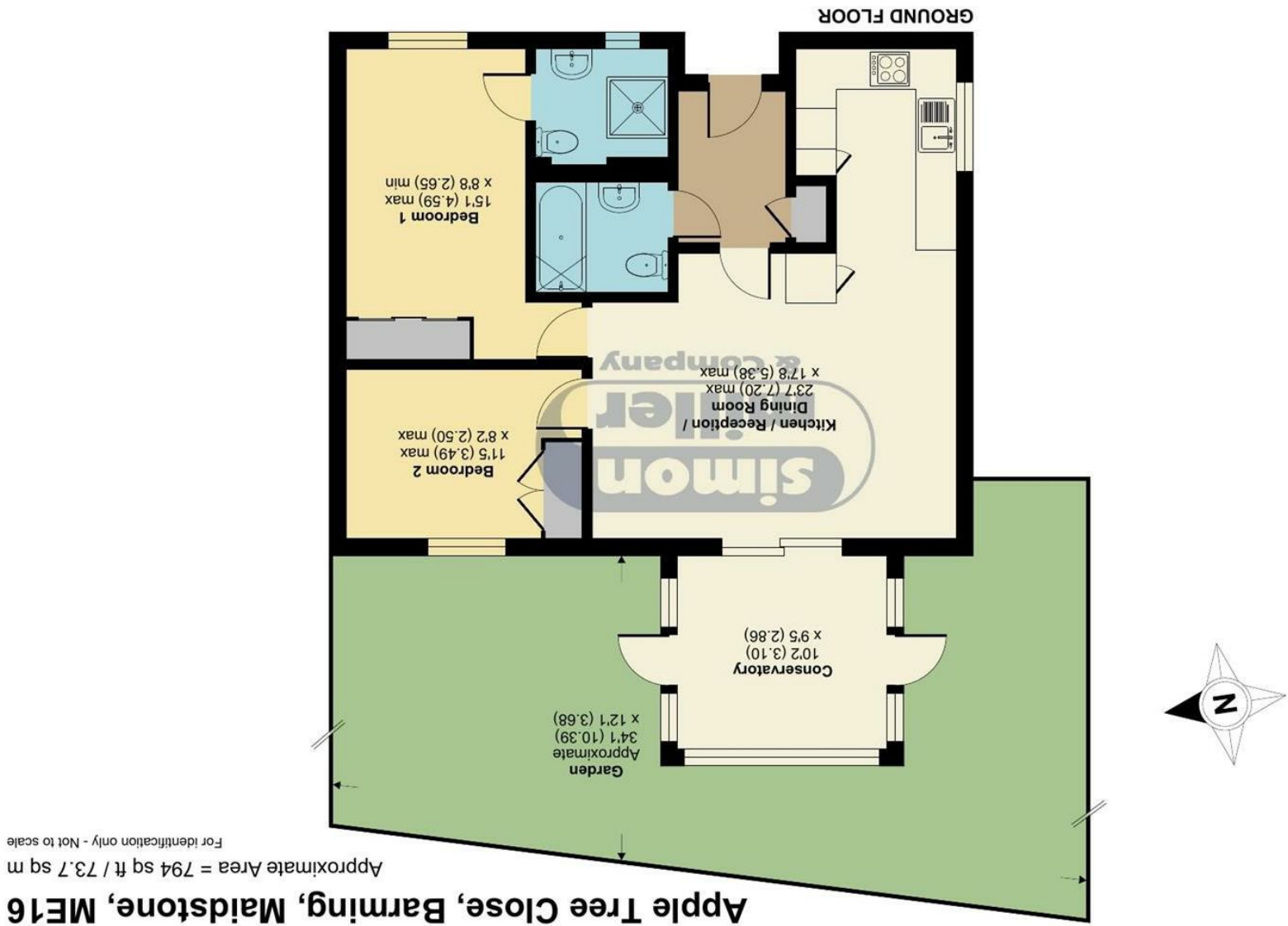


Floor plan produced in accordance with RICS Property Measurement 2nd Edition.  
Incorporating International Property Measurement Standards (IPMS2 Residential). © ncthecom 2025.  
Produced for Simon Miller & Company. REF: 1344907



1 Apple Tree Close, Barming, ME16 9HQ

Asking Price £275,000  
EPC RATING: E







Situated in the tranquil setting of Apple Tree Close in Barming, this charming semi-detached retirement bungalow offers a delightful blend of comfort and convenience. Built between 1980 and 1989, the property boasts two well-proportioned bedrooms and two bathrooms, making it an ideal choice for those seeking a low-maintenance lifestyle.

Upon entering, you will find an inviting reception room that provides ample space for relaxation and entertaining. The useful conservatory extends the living area, allowing for an abundance of natural light and a lovely view of the private garden, perfect for enjoying peaceful afternoons or hosting family gatherings.

The bungalow is designed with practicality in mind, featuring parking for one vehicle and easy access to communal parking for guests. Additionally, the property is warden assisted, ensuring peace of mind for residents.

Being chain-free, this bungalow presents a seamless opportunity for prospective buyers looking to settle into a serene community. With its well-maintained interiors and outdoor space, this property is not just a house, but a home where you can enjoy a fulfilling retirement. Don't miss the chance to make this delightful bungalow your own.

## MATERIAL INFORMATION

**Freehold**  
**Council Tax Band D**  
**EPC Report E**



• CHAIN FREE • Two Bedroom semi-Detached Retirement Bungalow • Bathroom & En-Suite Shower Room To Master Bedroom • Large Open Plan Living Area Leading To Kitchen • Useful Conservatory • Private Garden • Close To Communal Parking • Warden Assisted

Agents Note: All dimensions are approximate and quoted for guidance only. Reference to appliances, fixtures, fittings and services does not imply that they are necessarily in good condition, fit the purpose or are in working order. Interested parties are advised to obtain verification from their Solicitors as to the Freehold/Leasehold status of the property and confirmation regarding the condition of any fixtures and fittings included in the sale.

11, COLMAN HOUSE, MAIDSTONE, KENT, ME14 1DJ | 01622 691255 | MAIDSTONESALES@SIMONMILLER.CO.UK