



Brooks Place

Halling, Rochester ME2 1FG

- Modern & Contemporary One Bedroom Apartment
- One Allocated Parking Space & Visitor Bays
- Recently Fitted Wardrobes In Master Bedroom
- Open Plan Layout
- Ground Floor
- Recently Fitted Fully Integrated Kitchen
- Large Storage Cupboard
- Ready To View Now!

£220,000 Leasehold

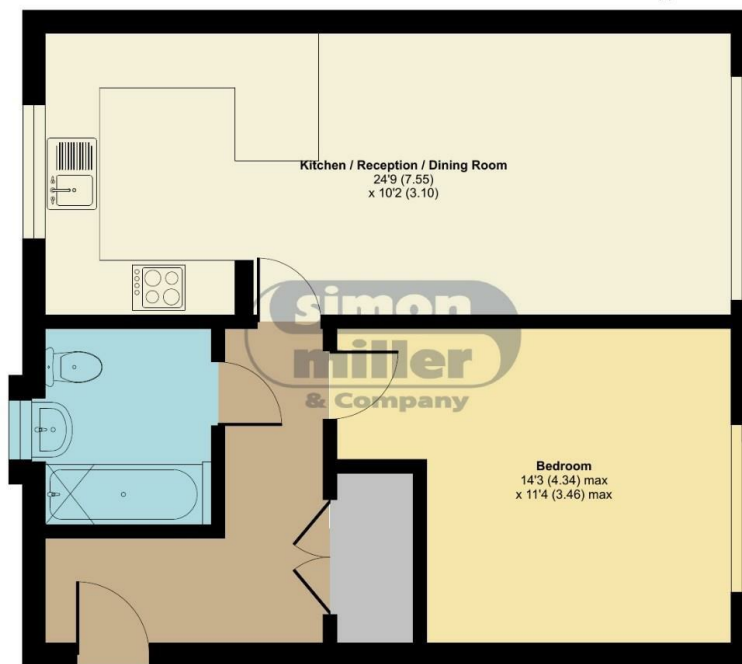


Local Authority
Council Tax Band
EPC Rating

Brooks House, Brooks Place, Halling, Rochester, ME2

Approximate Area = 546 sq ft / 50.7 sq m

For identification only - Not to scale



GROUND FLOOR

Floor plan produced in accordance with RICS Property Measurement 2nd Edition, Incorporating International Property Measurement Standards (IPMS2 Residential). © nichecom 2025. Produced for Simon Miller & Company. REF: 1361597

Malling Office

777 London Road, Larkfield, Aylesford,
Kent, ME20 6DE

Contact

01732 875706
larkfieldsales@simonmiller.co.uk
<https://simonmiller.co.uk/>

Agents Note: Whilst every care has been taken to prepare these particulars, they are for guidance purposes only. All measurements are approximate and for general guidance purposes only and whilst every care has been taken to ensure accuracy, they should not be relied upon and potential buyers/tenants are advised to recheck the measurements.

