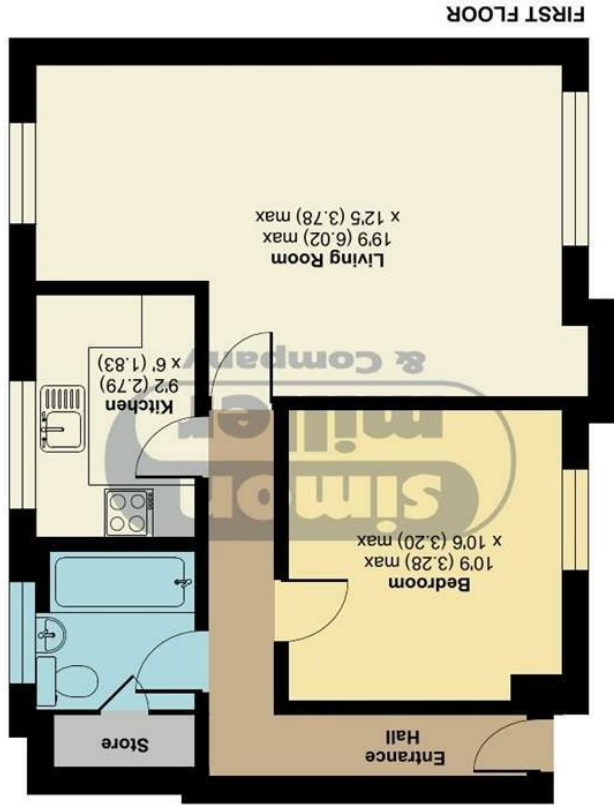




23 Basing Close, Maidstone, ME15 7UZ

Asking Price £150,000  
EPC RATING: C

**Basing Close, Maidstone, ME15**  
Approximate Area = 524 sq ft / 48.6 sq m  
For identification only - Not to scale



FIRST FLOOR

Floor plan produced in accordance with RICS Property Measurement Standards incorporating International Property Measurement Standards (IPMS2 Residential). © nchecom 2023. Produced for Simon Miller & Company. REF: 1050164



TAKE A LOOK AT: [WWW.SIMONMILLER.CO.UK](http://WWW.SIMONMILLER.CO.UK)







Welcome to this charming one-bedroom first-floor flat located in the desirable Basing Close, Maidstone. This delightful apartment, built in 1985, offers a generous living space of 524 square feet and is presented in great condition throughout, making it an ideal choice for first-time buyers or those looking to downsize.

As you enter the flat, you will find a well-proportioned reception room that provides a warm and inviting atmosphere, perfect for relaxation or entertaining guests. The bedroom is spacious and comfortable, ensuring a peaceful retreat at the end of the day. The property also features a well-appointed bathroom, catering to all your needs.

One of the standout features of this property is its chain-free status, allowing for a smooth and hassle-free purchase. Additionally, the flat benefits from a long lease and communal parking, providing convenience and peace of mind.

Situated within walking distance to Maidstone town centre, you will have easy access to a variety of shops, restaurants, and local amenities. The property is also well-connected, with excellent bus, train, and road links, making it easy to explore the surrounding areas or commute to work.

This apartment is not only a fantastic living space but also a wonderful opportunity to enjoy the vibrant lifestyle that Maidstone has to offer. Do not miss the chance to make this lovely flat your new home.

**MATERIAL INFORMATION**

**Leasehold**  
**Council Tax Band**  
**EPC Report C**



• One Bedroom First Floor Flat • CHAIN FREE • Ideal First Time Purchase Or Rental Investment (Current Rent £950.00PCM With Potential To Increase To £1,100.00) • Communal Parking • Great Condition Throughout • Popular & Pleasant Location • Walking Distance To Maidstone Town Center • Easy Access To Bus, Train And Road Links

Agents Note: All dimensions are approximate and quoted for guidance only. Reference to appliances, fixtures, fittings and services does not imply that they are necessarily in good condition, fit the purpose or are in working order. Interested parties are advised to obtain verification from their Solicitors as to the Freehold/Leasehold status of the property and confirmation regarding the condition of any fixtures and fittings included in the sale.

11, COLMAN HOUSE, MAIDSTONE, KENT, ME14 1DJ | 01622 691255 | MAIDSTONESALES@SIMONMILLER.CO.UK