



53 Hartridge Farm Lower Road, East Farleigh, ME15 0JR

Asking Price £200,000
EPC RATING:

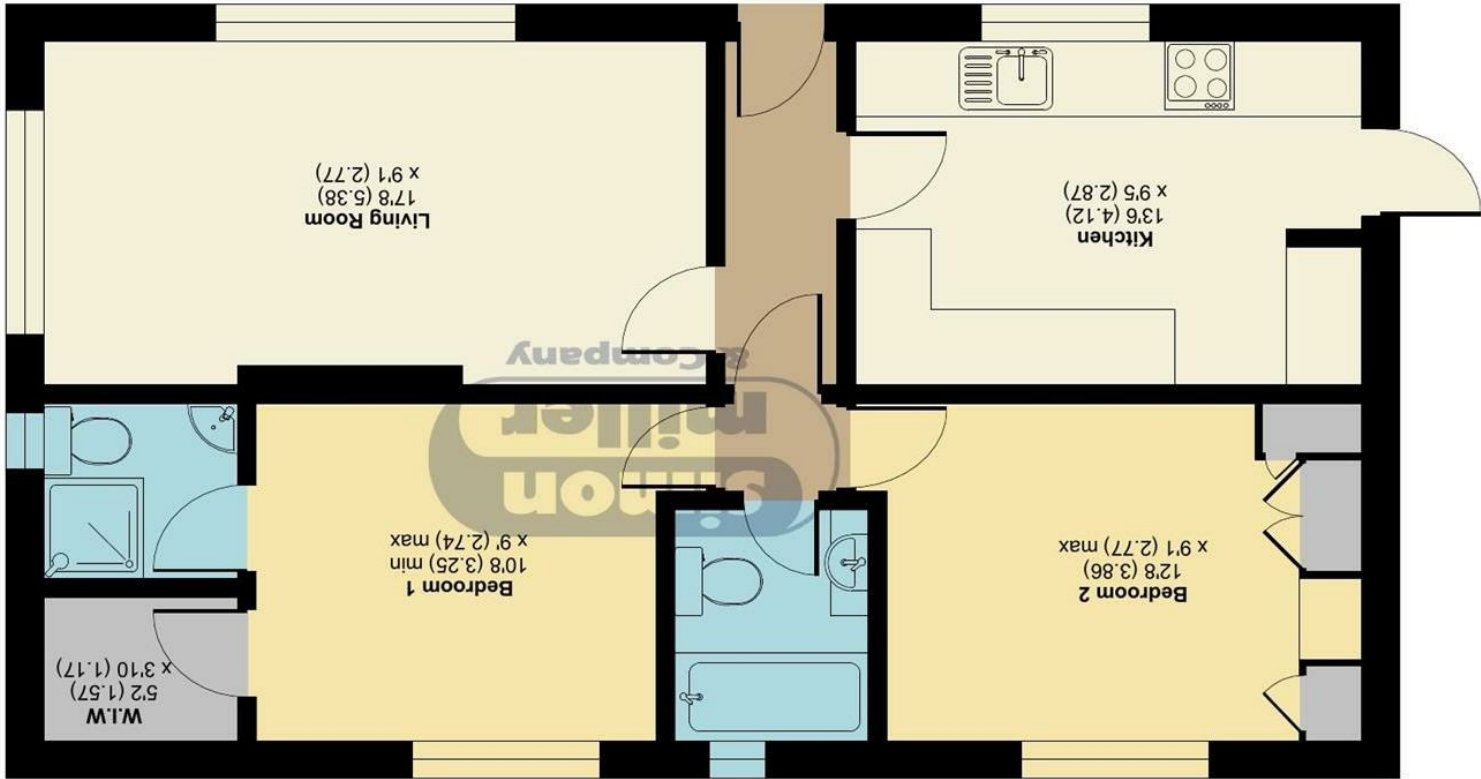
Lower Road, Maidstone, ME15

Approximate Area = 656 sq ft / 60.9 sq m

For identification only - Not to scale



GROUND FLOOR



Floor plan produced in accordance with RICS Property Measurement 2nd Edition. © ncthemcom 2025. Produced for Simon Miller & Company. REF: 1362200

TAKE A LOOK AT: WWW.SIMONMILLER.CO.UK





Situated in the picturesque Hartridge Farm, this charming two-bedroom mobile home on Lower Road, East Farleigh, offers a delightful retreat for those seeking a tranquil lifestyle. Built in 2014, this property combines modern living with the character of its early 20th-century surroundings, providing a unique blend of comfort and charm.

The property features two well-proportioned bedrooms, en-suite and main bathroom.

The property is complemented by the convenience of being within walking distance to the mainline East Farleigh Train Station, making commuting a breeze. Additionally, the local bus route into Central Maidstone is just a stone's throw away, providing easy access to a variety of amenities and services.

This property is situated within an over 55's development, making it an excellent choice for those looking to enjoy a peaceful community atmosphere.

MATERIAL INFORMATION

Freehold
Council Tax Band
EPC Report



- Idyllic setting within Hartridge Farm • Two Bedroom Park Home • Good Sized Kitchen • En-Suite To Master Bedroom • Riverside Views • Walking distance to mainline East Farleigh Train Station • In close proximity to local bus route into Central Maidstone • Over 55's development

Agents Note: All dimensions are approximate and quoted for guidance only. Reference to appliances, fixtures, fittings and services does not imply that they are necessarily in good condition, fit the purpose or are in working order. Interested parties are advised to obtain verification from their Solicitors as to the Freehold/Leasehold status of the property and confirmation regarding the condition of any fixtures and fittings included in the sale.

11, COLMAN HOUSE, MAIDSTONE, KENT, ME14 1DJ | 01622 691255 | MAIDSTONESALES@SIMONMILLER.CO.UK