



**simon
miller**
& Company

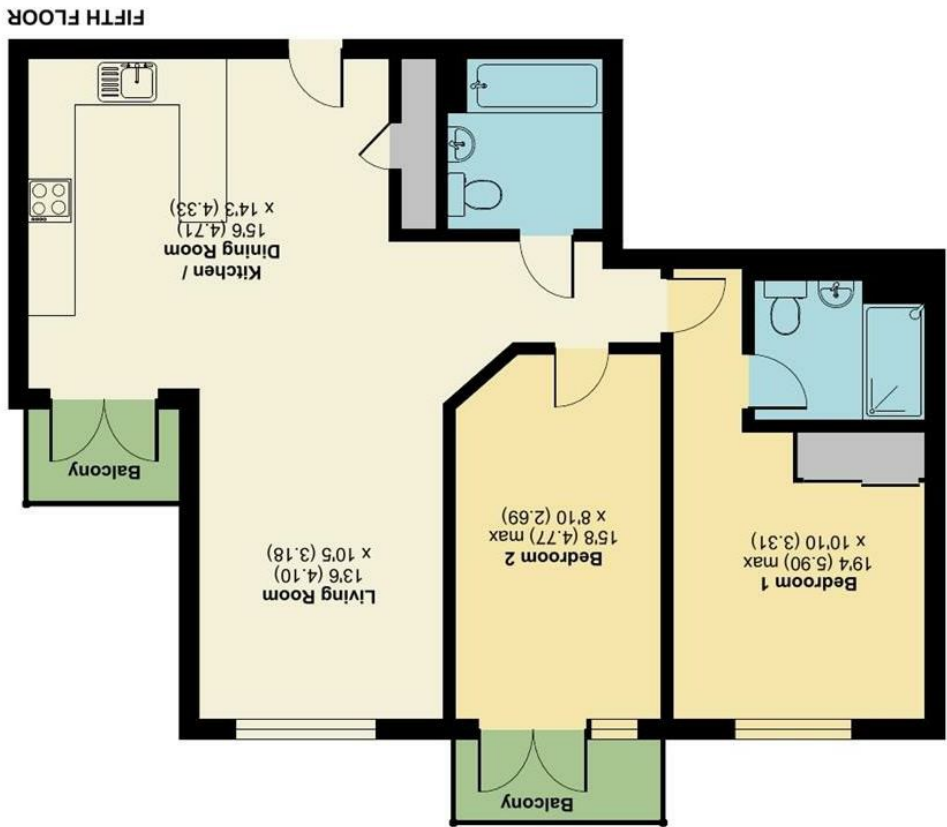
**Flat 57, Adeline Heights Rosalind Drive, Maidstone,
ME14 2FP**

Guide Price £270,000
EPC RATING: B

Adeline Heights, Rosalind Drive, Maidstone, ME14

Approximate Area = 862 sq ft / 80.1 sq m

For identification only - Not to scale



Floor plan produced in accordance with RICS Property Measurement 2nd Edition, incorporating International Property Measurement Standards (IPMS2 Residential). © ncthemcom 2025. Produced for Simon Miller & Company. REF: 1386682

TAKE A LOOK AT: WWW.SIMONMILLER.CO.UK

We love houses

**The Property
Ombudsman**

APPROVED CODE
TRADING STANDARDS GOV.UK



Located in the desirable area of Rosalind Drive, Maidstone, this beautifully presented apartment offers a modern living experience in a vibrant community. Built in 2021, this new build property spans an impressive 862 square feet, providing ample space for comfortable living.

The flat features two well-appointed bedrooms, including an en-suite to bedroom one. The additional bathroom is thoughtfully designed, catering to both residents and guests alike. The open-plan kitchen and living space create a welcoming atmosphere, perfect for entertaining.

Step outside onto one of the two balconies, where you can enjoy fresh air and lovely views, making it an ideal spot for morning coffee or evening relaxation. The property also benefits from underground allocated parking, providing peace of mind and easy access to your vehicle.

Situated within walking distance to Maidstone town centre, residents will appreciate the convenience of nearby shops, restaurants, and local amenities. This apartment is not just a home; it is a lifestyle choice in a popular location that combines modern living with accessibility.

MATERIAL INFORMATION

Leasehold
Council Tax Band D
EPC Report B



• GUIDE PRICE £270,000 - £280,000 • CHAIN FREE • Well Presented Two Bedroom Apartment • En-Suite & Family Bathroom • Two Balconys • Open Plan Kitchen/Living Space • Secure Underground Allocated Parking • Popular Location & Walking Distance To Maidstone Town Centre & Train Stations

Agents Note: All dimensions are approximate and quoted for guidance only. Reference to appliances, fixtures, fittings and services does not imply that they are necessarily in good condition, fit the purpose or are in working order. Interested parties are advised to obtain verification from their Solicitors as to the Freehold/Leasehold status of the property and confirmation regarding the condition of any fixtures and fittings included in the sale.

11, COLMAN HOUSE, MAIDSTONE, KENT, ME14 1DJ | 01622 691255 | MAIDSTONESALES@SIMONMILLER.CO.UK