



## Narwhal Crescent

Wouldham, Rochester ME1 3GL

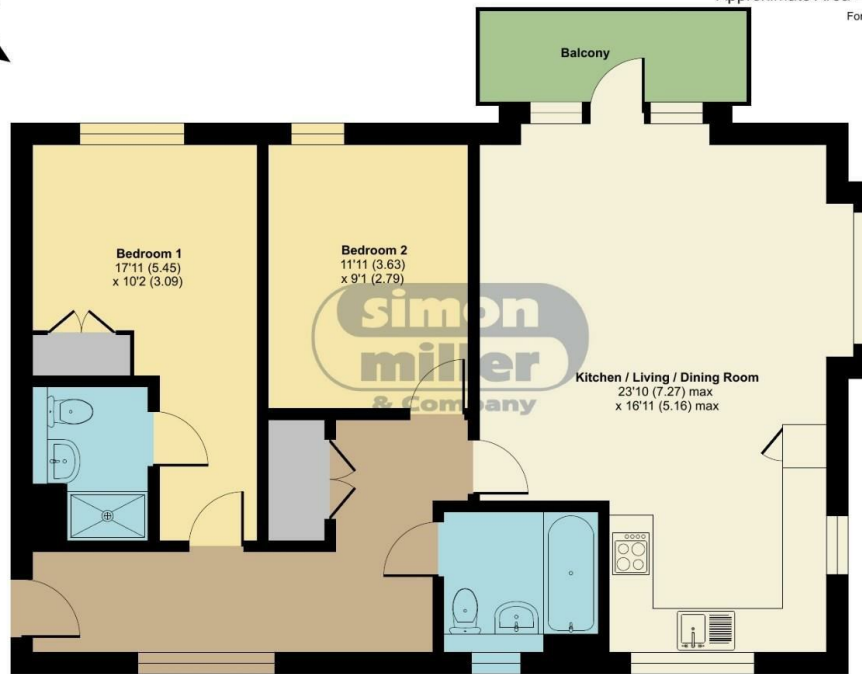
- Exceptional two double bedroom high-specification second-floor apartment
- Modern kitchen with ample storage and integrated appliances
- Stunning open-plan lounge and dining area
- Generous master bedroom with stylish en-suite shower room
- Private south west facing balcony with breathtaking river views
- Flooded with natural light
- Excellent commuter links
- Large entrance hallway with excellent built-in storage
- Allocated parking
- Scenic riverside walks and green spaces

**£295,000 Leasehold**

Local Authority  
Council Tax Band C  
EPC Rating B

## Narwhal Crescent, Wouldham, Rochester, ME1

Approximate Area = 838 sq ft / 77.8 sq m  
For identification only - Not to scale



SECOND FLOOR

Floor plan produced in accordance with RICS Property Measurement 2nd Edition, incorporating International Property Measurement Standards (IPMS2 Residential). © nichecom 2026. Produced for Simon Miller & Company. REF: 1395825

### Malling Office

777 London Road, Larkfield, Aylesford,  
Kent, ME20 6DE

### Contact

01732 875706  
larkfieldsales@simonmiller.co.uk  
<https://simonmiller.co.uk/>

Agents Note: Whilst every care has been taken to prepare these particulars, they are for guidance purposes only. All measurements are approximate and for general guidance purposes only and whilst every care has been taken to ensure accuracy, they should not be relied upon and potential buyers/tenants are advised to recheck the measurements.

