



Lunsford Lane

Larkfield, Aylesford ME20 6HZ

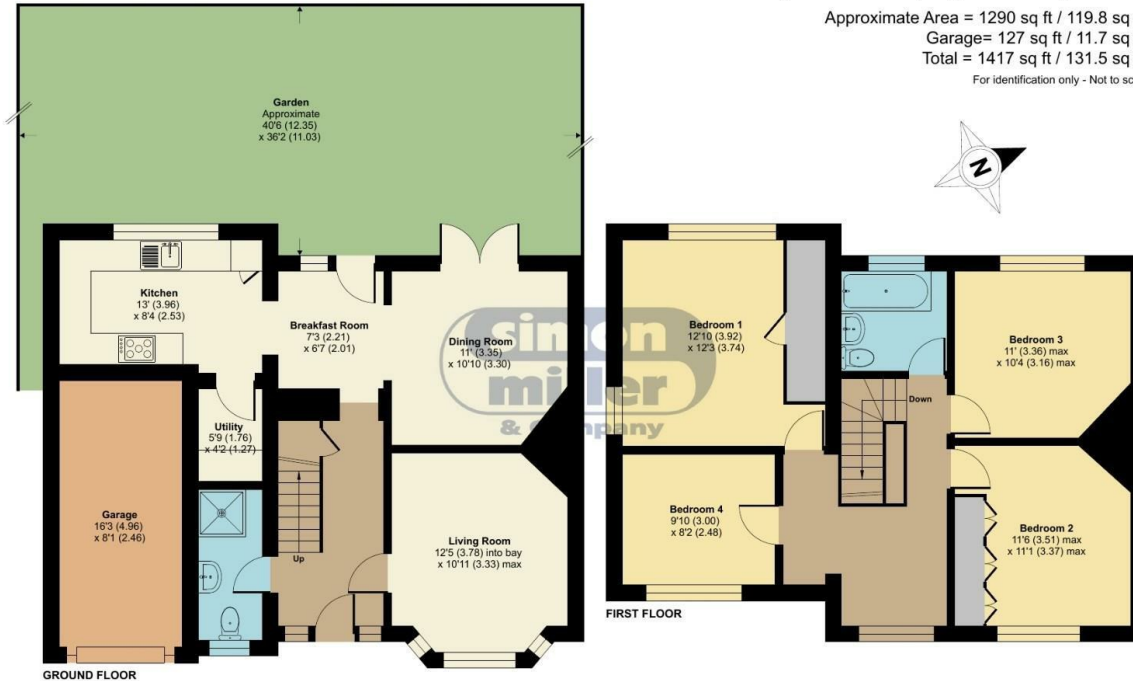
- GUIDE PRICE: £550,000-£575,000
- Located on one of Larkfield's premier roads
- Separate utility room and downstairs WC
- Large landing suitable for a home office
- Executive four bedroom 1930s semi-detached home on a desirable corner plot
- Cosy lounge with a bay window
 - West-facing rear garden
- Excellent location close to schools, local amenities, and leisure facilities

Guide Price £550,000 Freehold

Local Authority
Council Tax Band D
EPC Rating D

Lunsford Lane, Larkfield, Aylesford, ME20

Approximate Area = 1290 sq ft / 119.8 sq m
Garage = 127 sq ft / 11.7 sq m
Total = 1417 sq ft / 131.5 sq m
For identification only - Not to scale



Floor plan produced in accordance with RICS Property Measurement 2nd Edition, Incorporating International Property Measurement Standards (IPMS2 Residential). © nchecom 2026. Produced for Simon Miller & Company. REF: 1396073

Malling Office

777 London Road, Larkfield, Aylesford,
Kent, ME20 6DE

Contact

01732 875706
larkfieldsales@simonmiller.co.uk
<https://simonmiller.co.uk/>

Agents Note: Whilst every care has been taken to prepare these particulars, they are for guidance purposes only. All measurements are approximate and for general guidance purposes only and whilst every care has been taken to ensure accuracy, they should not be relied upon and potential buyers/tenants are advised to recheck the measurements.

