

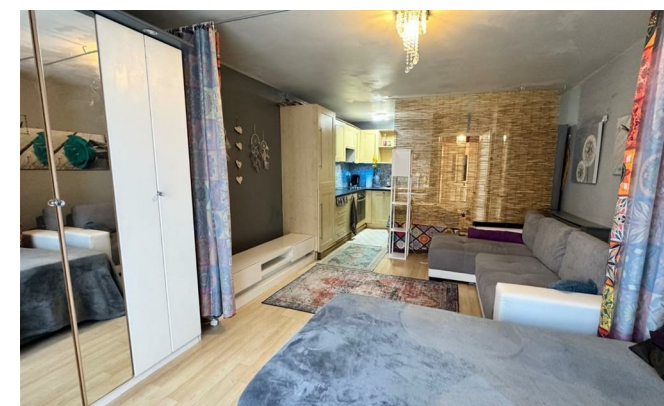


Elizabeth House

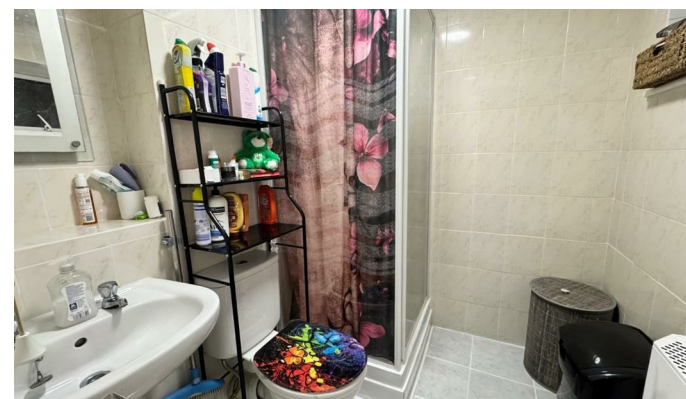
Alexandra Street, Maidstone ME14 2BU

- Furnished Studio Flat
- Ground Floor
- Fantastic Location
- Walking Distance to Maidstone Town Centre & Local Train Stations
- Available Beginning of February 2026

£800 PCM



Local Authority Maidstone
Borough Council
Council Tax Band A
EPC Rating C



Lettings Office

Lettings Division, 779 London Road,
Larkfield, Aylesford, Kent, ME20 6DE

Contact

01732 875777
lettings@simonmiller.co.uk
<https://simonmiller.co.uk/landlo>
services/

Agents Note: Whilst every care has been taken to prepare these particulars, they are for guidance purposes only. All measurements are approximate and for general guidance purposes only and whilst every care has been taken to ensure accuracy, they should not be relied upon and potential buyers/tenants are advised to recheck the measurements.