



## Townland Close

Biddenden, Ashford TN27 8AR

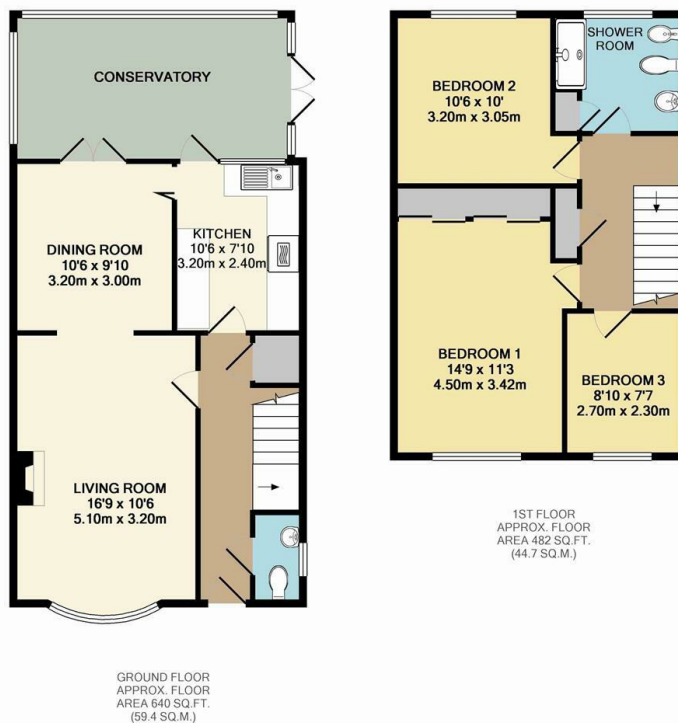
- Three Bedroom Semi-Detached Family Home
  - Fitted Kitchen
  - Central Village Location
  - Rear Garden
  - Available Immediately!
- Lounge / Dining Room
- Large Conservatory
- Downstairs Cloakroom
- Single Garage & Parking

**£1,500 PCM**





Local Authority Ashford  
Borough Council  
Council Tax Band D  
EPC Rating D



GROUND FLOOR  
APPROX. FLOOR  
AREA 640 SQ.FT.  
(59.4 SQ.M.)

TOTAL APPROX. FLOOR AREA 1121 SQ.FT. (104.2 SQ.M.)

Whilst every attempt has been made to ensure the accuracy of the floor plan contained here, measurements of doors, windows, rooms and any other items are approximate and no responsibility is taken for any error, omission, or mis-statement. This plan is for illustrative purposes only and should be used as such by any prospective purchaser. The services, systems and appliances shown have not been tested and no guarantee as to their operability or efficiency can be given.

Made with Metropix ©2016



### Lettings Office

Lettings Division, 779 London Road,  
Larkfield, Aylesford, Kent, ME20 6DE

### Contact

01732 875777  
[lettings@simonmiller.co.uk](mailto:lettings@simonmiller.co.uk)  
<https://simonmiller.co.uk/landlo/services/>

Agents Note: Whilst every care has been taken to prepare these particulars, they are for guidance purposes only. All measurements are approximate and for general guidance purposes only and whilst every care has been taken to ensure accuracy, they should not be relied upon and potential buyers/tenants are advised to recheck the measurements.