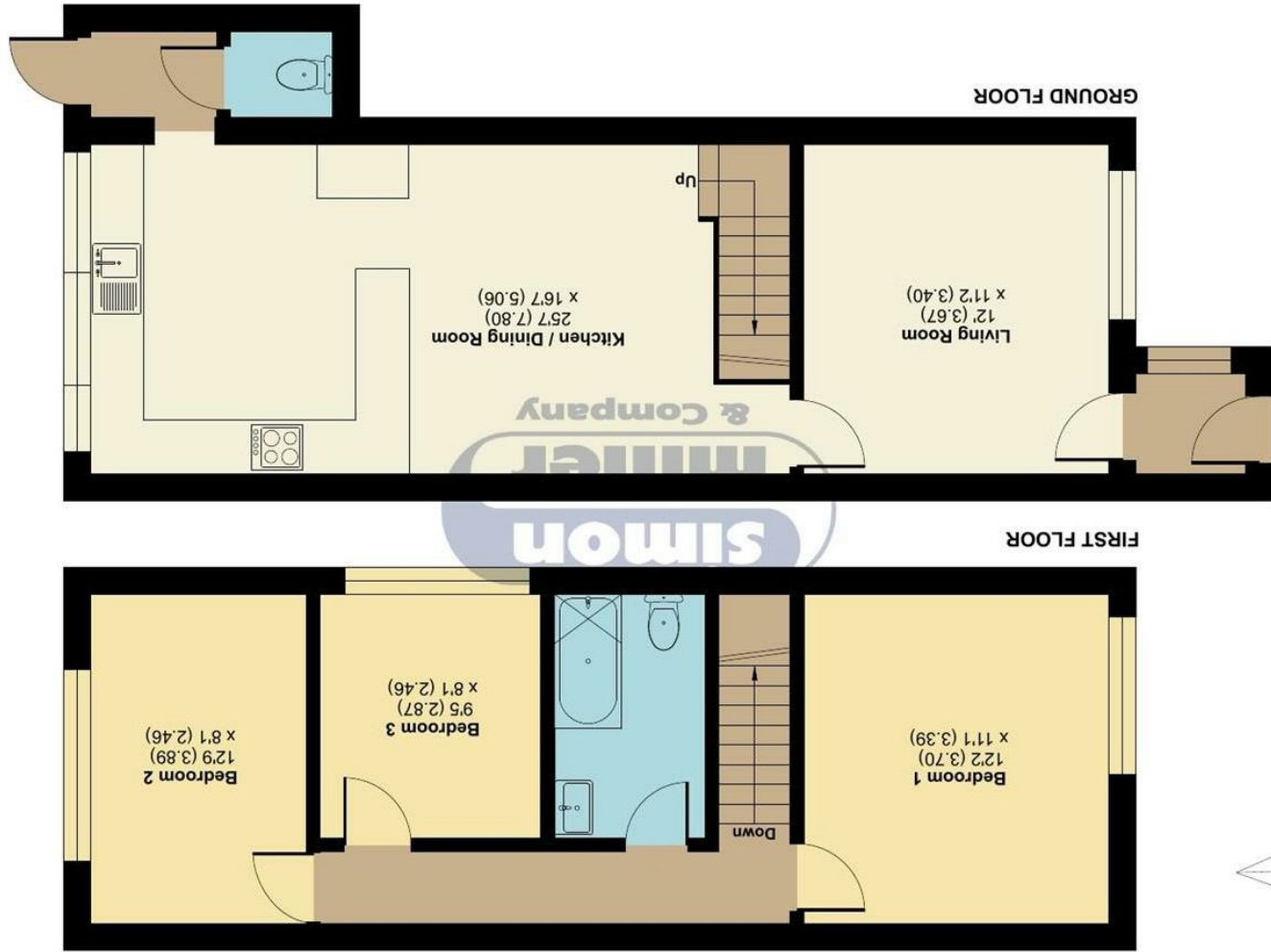


Floor plan produced in accordance with RICS Property Measurement 2nd Edition, incorporating International Property Measurement Standards (IPMS2 Residential). © nchecom 2026. Produced for Simon Miller & Company. REF: 1446536



Church Street, Boughton Monchelsea, Maidstone, ME17

Approximate Area = 951 sq ft / 88.3 sq m

For identification only - Not to scale

8 Church Street, Maidstone, ME17 4HW

Asking Price £325,000
EPC RATING: C





Situated in the charming village of Boughton Monchelsea, this delightful three-bedroom terraced house on Church Street offers a perfect blend of character and modern living making it an ideal first time home.

Upon entering, you are welcomed into a reception room which leads into the large extended kitchen/diner which is a standout feature, providing ample space for family meals and entertaining guests.

One of the highlights of this property is the good sized rear garden, perfect for outdoor activities, gardening, or simply enjoying the fresh air. Additionally, the double garage to the rear offers valuable storage space or the potential for a workshop, catering to various needs.

Residents will appreciate the convenience of being within walking distance to local amenities, and schools ensuring that everyday necessities are easily accessible.

This property is offered to the market chain free, making it an attractive option for those looking to move swiftly. Whether you are a first-time buyer, a growing family, this terraced home in Boughton Monchelsea is a wonderful opportunity not to be missed.

MATERIAL INFORMATION

Freehold
Council Tax Band C
EPC Report C



- CHAIN FREE • Three Bedroom Terraced Home • Extended Kitchen/Diner • Upstairs Family Bathroom & Downstairs WC • Large Rear Garden • Double Garage To The Rear • Popular Village Location • Walking Distance to Local Amenities & Schools

Agents Note: All dimensions are approximate and quoted for guidance only. Reference to appliances, fixtures, fittings and services does not imply that they are necessarily in good condition, fit the purpose or are in working order. Interested parties are advised to obtain verification from their Solicitors as to the Freehold/Leasehold status of the property and confirmation regarding the condition of any fixtures and fittings included in the sale.

11, COLMAN HOUSE, MAIDSTONE, KENT, ME14 1DJ | 01622 691255 | MAIDSTONESALES@SIMONMILLER.CO.UK