



Matthews Avenue

Harrietsham, ME17 1GJ

- GUIDE PRICE £375,000 - £400,000
- Beautifully Presented Throughout
 - Study & Utility Room
- Family Bathroom, En-Suite To Master & Downstairs WC
- Sought After Harrietsham Location
- Four Bedroom Semi-Detached Family Home
 - Kitchen/Diner
 - Garage & Off Road Parking
 - Patio & Laid To Lawn Rear Garden
- Close To Local Shops

Guide Price £375,000 Freehold

Local Authority
Council Tax Band E
EPC Rating B

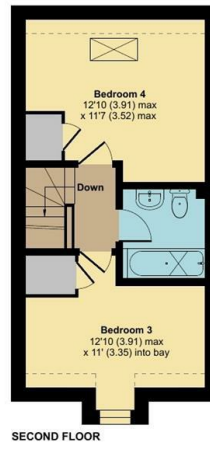
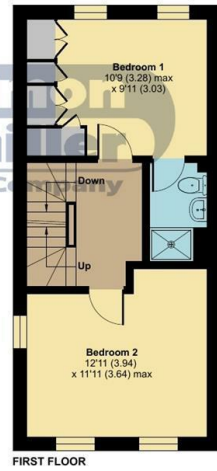
Matthews Avenue, Harrietsham, Maidstone, ME17

Approximate Area = 1102 sq ft / 102.3 sq m
Limited Use Area(s) = 23 sq ft / 2.1 sq m
Garage = 192 sq ft / 17.8 sq m
Total = 1317 sq ft / 122.2 sq m

For identification only - Not to scale



Denotes restricted head height



Floor plan produced in accordance with RICS Property Measurement 2nd Edition, Incorporating International Property Measurement Standards (IPMS2 Residential). © nichecom 2026. Produced for Simon Miller & Company. REF: 1450621

Maidstone & The Weald Office
11 Colman House, Colman Parade, King Street, Maidstone, Kent, ME14 1DJ

Contact
01622 691255
maidstonesales@simonmiller.co.uk

Agents Note: Whilst every care has been taken to prepare these particulars, they are for guidance purposes only. All measurements are approximate and for general guidance purposes only and whilst every care has been taken to ensure accuracy, they should not be relied upon and potential buyers/tenants are advised to recheck the measurements.

