



## Fauchons Close Bearsted, Maidstone ME14 4BB

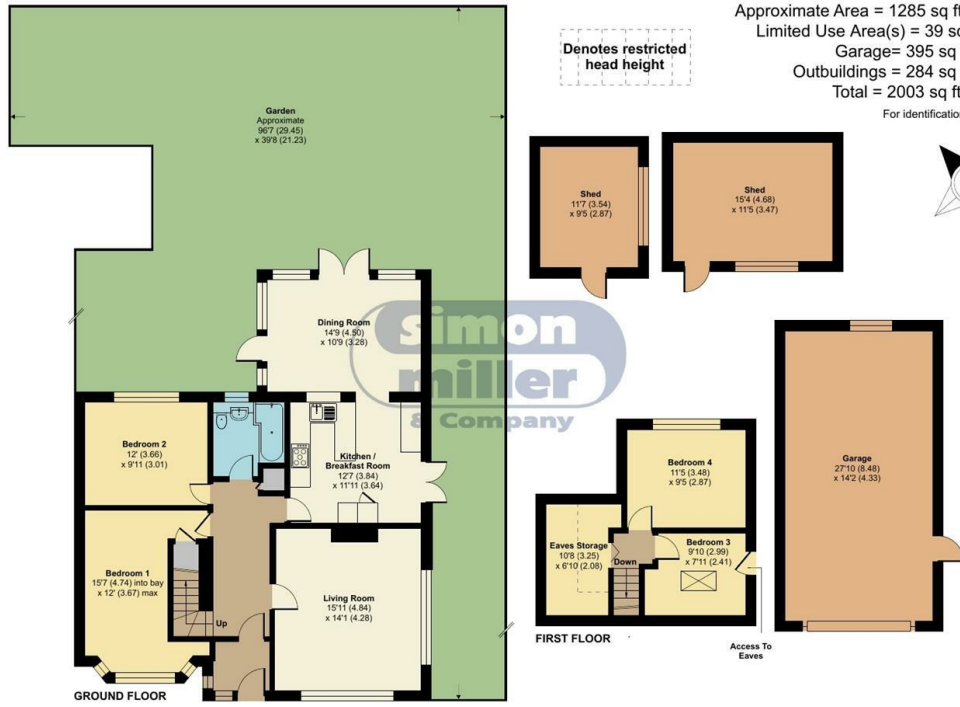
- Four Bedroom Detached Chalet Bungalow
- Dining Room With Access To Large Rear Garden
- Double Garage with Room for Four Cars Plus Off Street Parking
- Sought After Bearsted Location, Walking Distance To Mote Park
- Easy Access To Motorway Links
- Kitchen/Breakfast Room
- Large Rear Garden
- First Time Coming To The Market In Almost 4 Decades
- Close To Maidstone Town Center, Shops & Schools
- Walking Distance To The Train Station

**Offers Over £600,000 Freehold**

Local Authority  
Council Tax Band E  
EPC Rating D

### Fauchons Close, Bearsted, Maidstone, ME14

Approximate Area = 1285 sq ft / 119.3 sq m  
 Limited Use Area(s) = 39 sq ft / 3.6 sq m  
 Garage = 395 sq ft / 36.6 sq m  
 Outbuildings = 284 sq ft / 26.3 sq m  
 Total = 2003 sq ft / 185.8 sq m  
 For identification only - Not to scale



Floor plan produced in accordance with RICS Property Measurement 2nd Edition, Incorporating International Property Measurement Standards (IPMS2 Residential). © n3chem 2026. Produced for Simon Miller & Company. REF: 1456463

**Maidstone & The Weald Office**  
 11 Colman House, Colman Parade, King Street, Maidstone, Kent, ME14 1DJ

**Contact**  
 01622 691255  
 maidstonesales@simonmiller.co.uk

Agents Note: Whilst every care has been taken to prepare these particulars, they are for guidance purposes only. All measurements are approximate and for general guidance purposes only and whilst every care has been taken to ensure accuracy, they should not be relied upon and potential buyers/tenants are advised to recheck the measurements.

