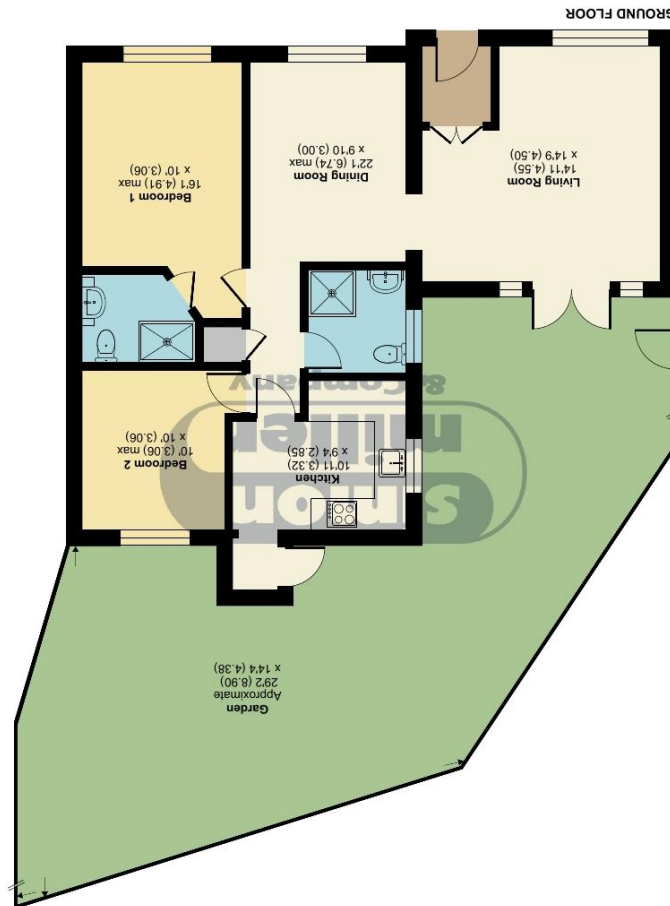


Floor plan produced in accordance with RICS Property Measurement 2nd Edition, incorporating International Property Measurement Standards (IPMS2 Residential). © nchecom 2026. Produced for Simon Miller & Company. REF: 1457297



Approximate Area = 841 sq ft / 78.1 sq m
For identification only - Not to scale

Norman Road, West Malling, ME19

49 Norman Road, West Malling, Kent, ME19 6RN

OFFERS IN REGION OF: £450,000
EPC RATING: C





This extended 2/3 bedroom detached bungalow is situated on a corner plot and located approximately 500 meters from the popular West Malling high street with its shopping facilities, restaurants and main line station.

The property offers flexible accommodation and has formal 2 bedrooms, (with the potential for a third subject to some internal alterations) a main bathroom plus an ensuite shower room. To the exterior a private driveway provides off road parking for one vehicle and there are two courtyard garden areas to the rear.

There is also the added benefit of NO ONWARD CHAIN.

Please contact the office to arrange a look inside.

**Freehold
EPC: C
Council Tax: D
Full Fibre Broadband Available**



- **A DETACHED BUNGALOW**
- **WALKING DISTANCE TO WEST MALLING HIGH STREET**
- **DRIVEWAY AND PARKING TO SIDE**

- **BATHROOM PLUS ENSUITE SHOWER ROOM**
- **CORNER PLOT**
- **VACANT POSSESSION AVAILABLE**

TAKE A LOOK AT: WWW.SIMONMILLER.CO.UK

TH3002

MR0856/180615/050815/051015LE

Agents Note: All dimensions are approximate and quoted for guidance only. Reference to appliances, fixtures, fittings and services does not imply that they are necessarily in good condition, fit the purpose or are in working order. Interested parties are advised to obtain verification from their Solicitors as to the Freehold/Leasehold status of the property and confirmation regarding the condition of any fixtures and fittings included in the sale.

777-779 LONDON ROAD, LARKFIELD, AYLESFORD, KENT, ME20 6DE | 01732 875 706 | LARKFIELDSALES@SIMONMILLER.CO.UK