



Tonbridge Road , Maidstone ME16 9LH

- Five Bedroom Semi-Detached Family Home
 - Set Out Over Three Floors
- Family Bathroom & En-Suite To Master Bedroom
 - Good Sized Rear Garden
 - Sought After Location
- Kitchen/Dining Room
 - Conservatory
- Beautifully Presented Throughout
 - Off Road Parking
 - Close To Shops, Schools & Transportation Links

Offers In Excess Of £425,000 Freehold

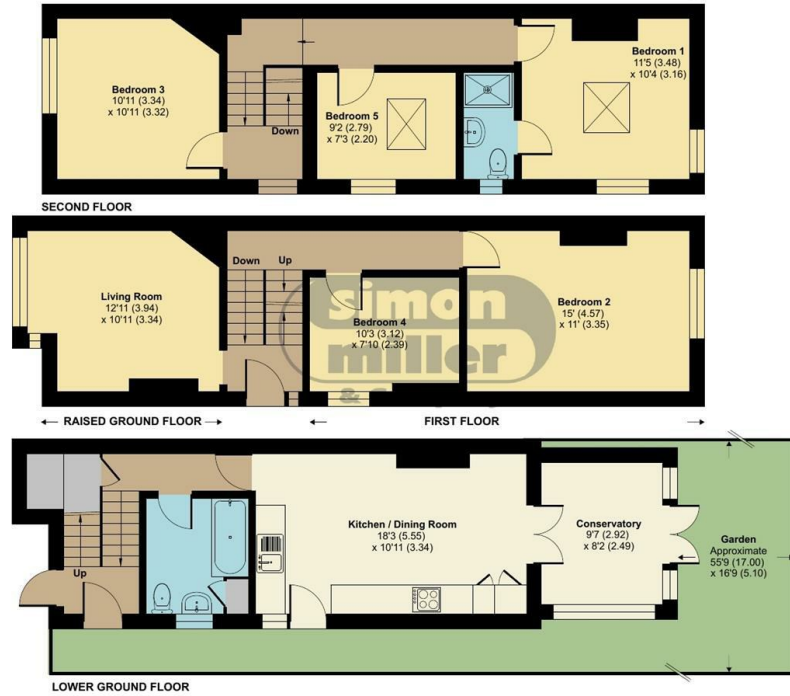


Local Authority
Council Tax Band D
EPC Rating E

Tonbridge Road, Maidstone, ME16

Approximate Area = 1368 sq ft / 127 sq m

For identification only - Not to scale



Floor plan produced in accordance with RICS Property Measurement 2nd Edition, Incorporating International Property Measurement Standards (IPMS2 Residential). © nichecom 2026. Produced for Simon Miller & Company. REF: 1449391



Maidstone & The Weald Office
11 Colman House, Colman Parade, King
Street, Maidstone, Kent, ME14 1DJ

Contact
01622 691255
maidstonesales@simonmiller.co.uk

Agents Note: Whilst every care has been taken to prepare these particulars, they are for guidance purposes only. All measurements are approximate and for general guidance purposes only and whilst every care has been taken to ensure accuracy, they should not be relied upon and potential buyers/tenants are advised to recheck the measurements.