



Lambe Close , Snodland ME6 5PE

- CHAIN FREE!!! - Ground Floor Apartment
- Private SOUTH Facing Balcony
- Master Bedroom With En-Suite
- Fully Integrated Modern Kitchen
- Modern & Contemporary Throughout
- Allocated Parking
- Two Double Bedrooms
- Open Plan Layout

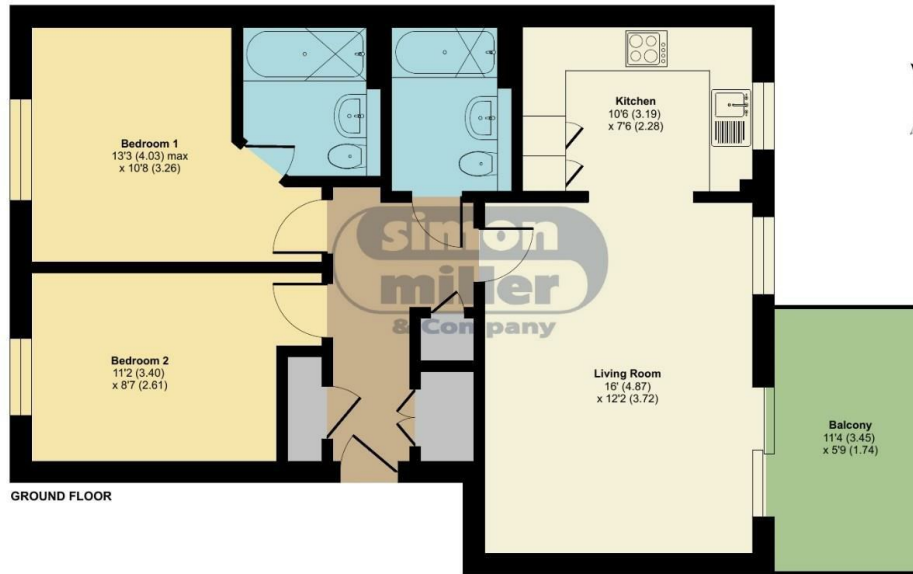
£234,995 Leasehold

Local Authority
Council Tax Band C
EPC Rating

Lambe Close, Snodland, ME6

Approximate Area = 700 sq ft / 65 sq m

For identification only - Not to scale



Floor plan produced in accordance with RICS Property Measurement 2nd Edition, Incorporating International Property Measurement Standards (IPMS2 Residential). © n3cheom 2026. Produced for Simon Miller & Company. REF: 1471001

Malling Office

777 London Road, Larkfield, Aylesford,
Kent, ME20 6DE

Contact

01732 875706
larkfieldsales@simonmiller.co.uk
<https://simonmiller.co.uk/>

Agents Note: Whilst every care has been taken to prepare these particulars, they are for guidance purposes only. All measurements are approximate and for general guidance purposes only and whilst every care has been taken to ensure accuracy, they should not be relied upon and potential buyers/tenants are advised to recheck the measurements.