



Martin Square
Larkfield, Aylesford ME20 6QJ

£225,000 Leasehold



Local Authority
Council Tax Band
EPC Rating



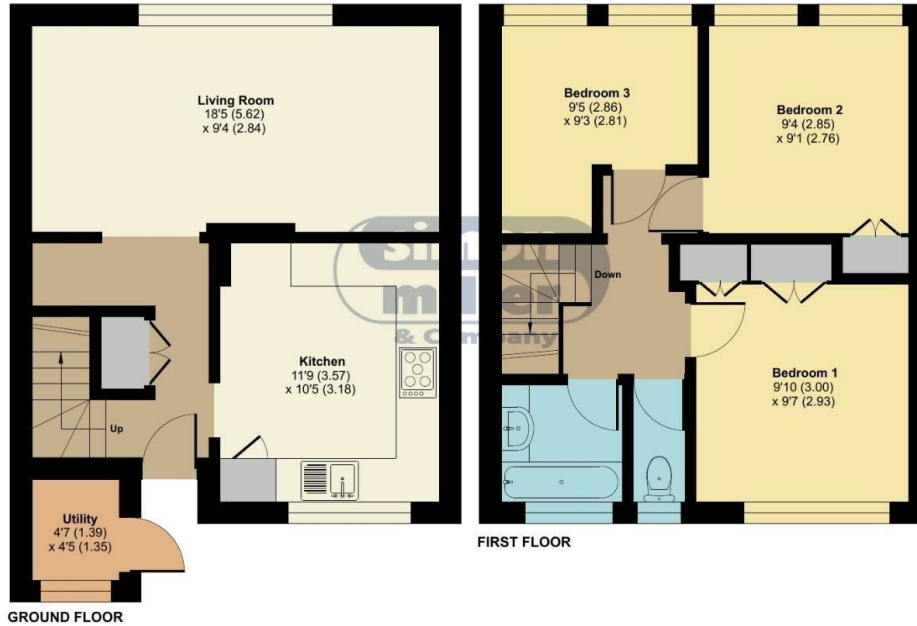
Martin Square, Larkfield, Aylesford, ME20

Approximate Area = 776 sq ft / 72 sq m

Outbuilding = 18 sq ft / 1.6 sq m

Total = 794 sq ft / 73.6 sq m

For identification only - Not to scale



Floor plan produced in accordance with RICS Property Measurement 2nd Edition, incorporating International Property Measurement Standards (IPMS2 Residential). © nrichcom 2026. Produced for Simon Miller & Company. REF: 1468209

Malling Office

777 London Road, Larkfield, Aylesford,
Kent, ME20 6DE

Contact

01732 875706
larkfieldsales@simonmiller.co.uk
<https://simonmiller.co.uk/>

Agents Note: Whilst every care has been taken to prepare these particulars, they are for guidance purposes only. All measurements are approximate and for general guidance purposes only and whilst every care has been taken to ensure accuracy, they should not be relied upon and potential buyers/tenants are advised to recheck the measurements.

