



Millbrook

Leybourne, West Malling ME19 5QJ

- One-bedroom end-of-terrace home in a highly sought-after location
 - Driveway providing parking for two vehicles
 - Substantial 13ft x 8ft garden shed offering excellent storage/workshop space
- Located close to West Malling with excellent amenities, cafés, shops & transport links
- Excellent curb appeal with smart frontage
- Stunning south-facing rear garden
- Larger-than-average plot due to end-of-terrace position
- Bright and airy living room

£285,000 Freehold

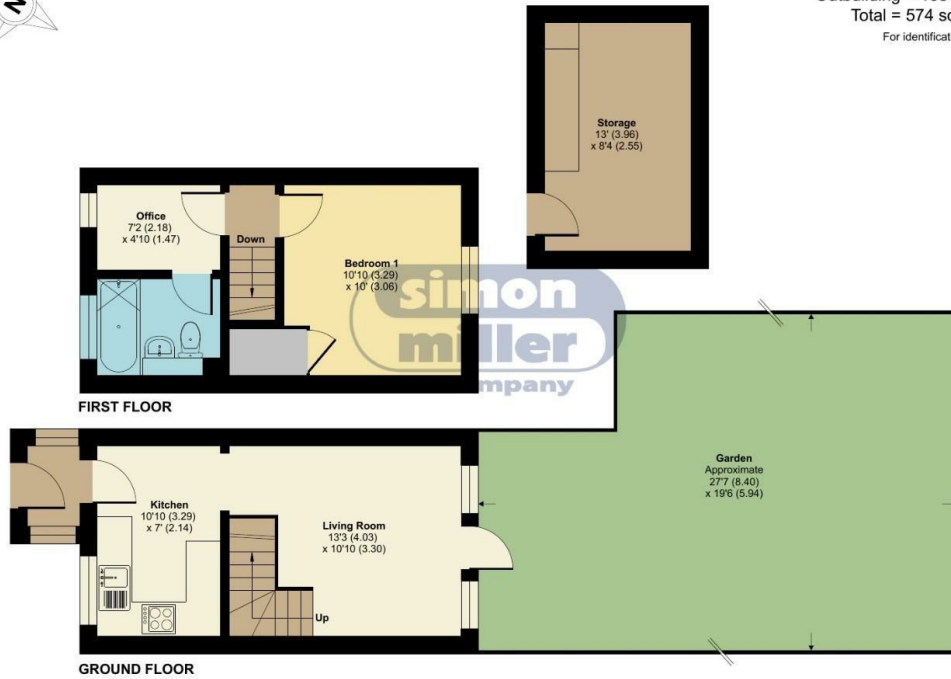


Local Authority
Council Tax Band B
EPC Rating



Millbrook, Leybourne, West Malling, ME19

Approximate Area = 466 sq ft / 43.2 sq m
Outbuilding = 108 sq ft / 10 sq m
Total = 574 sq ft / 53.2 sq m
For identification only - Not to scale



Floor plan produced in accordance with RICS Property Measurement 2nd Edition, Incorporating International Property Measurement Standards (IPMS2 Residential). © n3chem 2026. Produced for Simon Miller & Company. REF: 1468712



Malling Office
777 London Road, Larkfield, Aylesford,
Kent, ME20 6DE

Contact
01732 875706
larkfieldsales@simonmiller.co.uk
<https://simonmiller.co.uk/>

Agents Note: Whilst every care has been taken to prepare these particulars, they are for guidance purposes only. All measurements are approximate and for general guidance purposes only and whilst every care has been taken to ensure accuracy, they should not be relied upon and potential buyers/tenants are advised to recheck the measurements.