

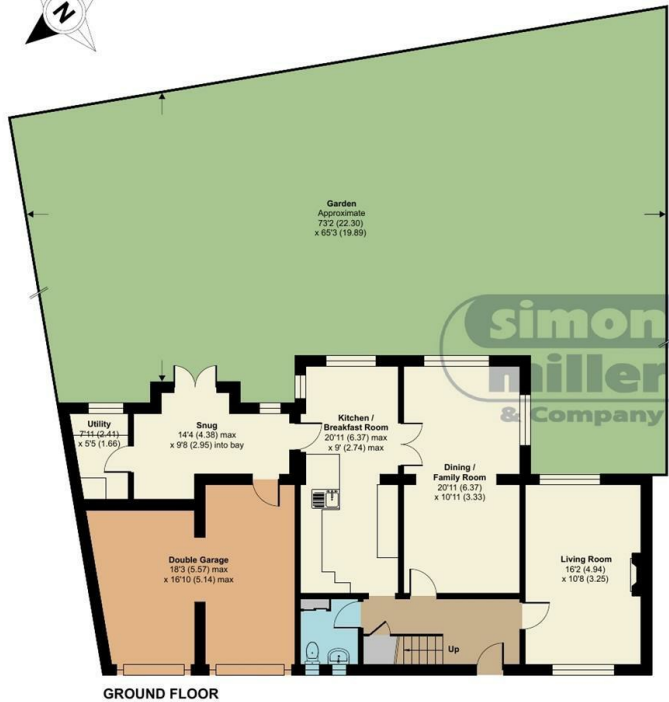


Banky Meadow , Maidstone ME16 9JX

- Four Bedroom Detached Family Home
 - CHAIN FREE
 - No Through Road
- Downstairs WC And Utility Room
- Easy Access To Maidstone Town Center Whilst Also Having Kent Countryside On Your Doorstep
- Extended To Side And Rear
- One Of The Most Premier And Sought After Roads In Barming
- Potential To Extend And Enhance The Home Substantially Subject To Planning Permission Being Obtainable
- Double Garage And Off Street Parking For Several Vehicles
- Train Station And Motorway Links Nearby

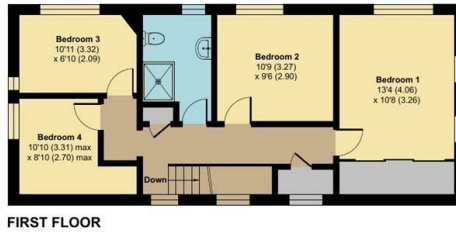
Asking Price £750,000 Freehold

Local Authority
Council Tax Band F
EPC Rating D



Banky Meadow, Maidstone, ME16

Approximate Area = 1555 sq ft / 144.4 sq m
Garage = 276 sq ft / 25.6 sq m
Total = 1831 sq ft / 170 sq m
For identification only - Not to scale



Floor plan produced in accordance with RICS Property Measurement 2nd Edition, incorporating International Property Measurement Standards (IPMS2 Residential). © nichecom 2026. Produced for Simon Miller & Company. REF: 1480377



Maidstone & The Weald Office
11 Colman House, Colman Parade, King
Street, Maidstone, Kent, ME14 1DJ

Contact
01622 691255
maidstonesales@simonmiller.co.uk

Agents Note: Whilst every care has been taken to prepare these particulars, they are for guidance purposes only. All measurements are approximate and for general guidance purposes only and whilst every care has been taken to ensure accuracy, they should not be relied upon and potential buyers/tenants are advised to recheck the measurements.