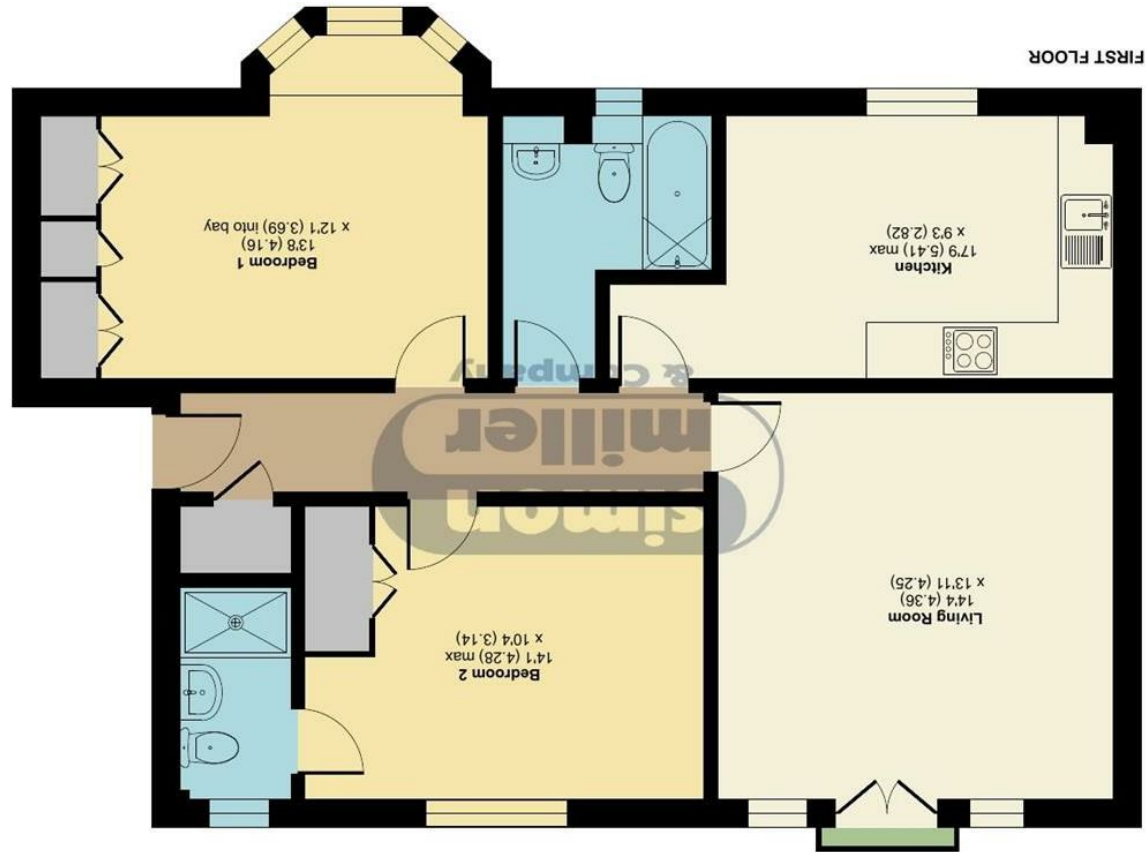


Floor plan produced in accordance with RICS Property Measurement 2nd Edition, incorporating International Property Measurement Standards (IPMS2 Residential). © nchecom 2026. Produced for Simon Miller & Company. REF: 1485812



Approximate Area = 853 sq ft / 79.2 sq m
For identification only - Not to scale

Harrietsham House, Burdock Court, Maidstone, ME16

Guide Price £235,000
EPC RATING: C

Harrietsham House Burdock Court, Maidstone, ME16 0GN





Offered chain free, this charming two-bedroom first floor apartment is located in the desirable part of Barming. Well presented throughout, the property is an ideal first-time buy, offering a perfect blend of comfort and convenience.

As you enter, you will find a spacious reception room that is filled with natural light, thanks to the delightful Juliet balcony that opens up to the outside. This inviting space is perfect for relaxing or entertaining guests. The apartment features two good sized bedrooms, providing ample space for rest and relaxation. Additionally, the property benefits from a family bathroom and en-suite, ensuring that both residents and visitors have easy access to facilities. The property also benefits from allocated parking for one car with additional visitor parking.

Residents will appreciate the proximity to Maidstone Hospital and a variety of shops, making daily errands and healthcare access incredibly convenient.

MATERIAL INFORMATION

Leasehold
Council Tax Band D
EPC Report C



- CHAIN FREE • Ideal First Time Buy • Two Bedroom First Floor Apartment • Well Presented Throughout • Juliet Balcony To Living Room • En-Suite To Main Bedroom • Allocated Parking • Close To Maidstone Hospital, Shops & Schools • Sought After Barming Location

Agents Note: All dimensions are approximate and quoted for guidance only. Reference to appliances, fixtures, fittings and services does not imply that they are necessarily in good condition, fit the purpose or are in working order. Interested parties are advised to obtain verification from their Solicitors as to the Freehold/Leasehold status of the property and confirmation regarding the condition of any fixtures and fittings included in the sale.

11, COLMAN HOUSE, MAIDSTONE, KENT, ME14 1DJ | 01622 691255 | MAIDSTONESALES@SIMONMILLER.CO.UK