



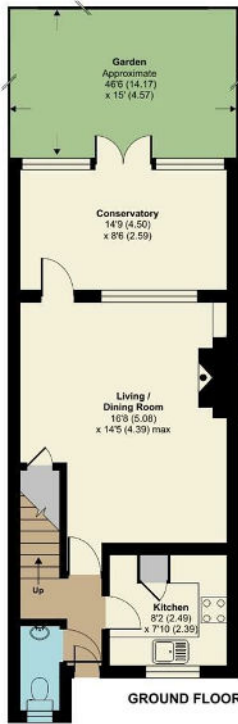
## Thackeray Road

Larkfield, Aylesford ME20 6TJ

- South West Facing Rear Garden
  - Garage En Bloc
- Popular 'Poets' Development
- Open Plan Lounge / Diner
- Downstairs Cloakroom
- Situated Within Close Proximity Of Amenities

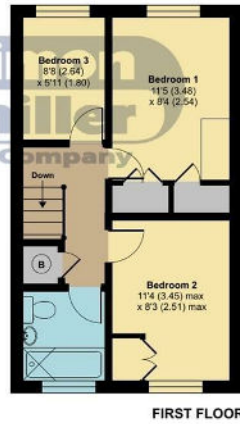
**Offers In Excess Of £300,000 Freehold**

Local Authority Tonbridge and  
Malling Borough Council  
Council Tax Band C  
EPC Rating



**Thackeray Road, Larkfield, Aylesford, ME20**

Approximate Area = 898 sq ft / 83.4 sq m  
Outbuilding = 24 sq ft / 2.2 sq m  
Total = 922 sq ft / 85.6 sq m  
For identification only - Not to scale



**RICS Certified Property Measurer** Floor plan produced in accordance with RICS Property Measurement Standards incorporating International Property Measurement Standards (IPMS2 Residential). © nichecom 2022. Produced for Simon Miller & Company. REF: 877353.

**Malling Office**  
777 London Road, Larkfield, Aylesford,  
Kent, ME20 6DE

**Contact**  
01732 875706  
larkfieldsales@simonmiller.co.uk  
<https://simonmiller.co.uk/>

Agents Note: Whilst every care has been taken to prepare these particulars, they are for guidance purposes only. All measurements are approximate and for general guidance purposes only and whilst every care has been taken to ensure accuracy, they should not be relied upon and potential buyers/tenants are advised to recheck the measurements.