



Willington Street

, Maidstone ME15 8HJ

- GUIDE PRICE £260,000 - £270,000
 - Three Bedrooms
 - Established Parking to Rear
 - Popular Location
- End Terraced Home
- 17ft x 11ft Sitting/Dining Room
- Attractive Spacious Rear Garden
- Close To Local Amenities

Guide Price £260,000 Freehold

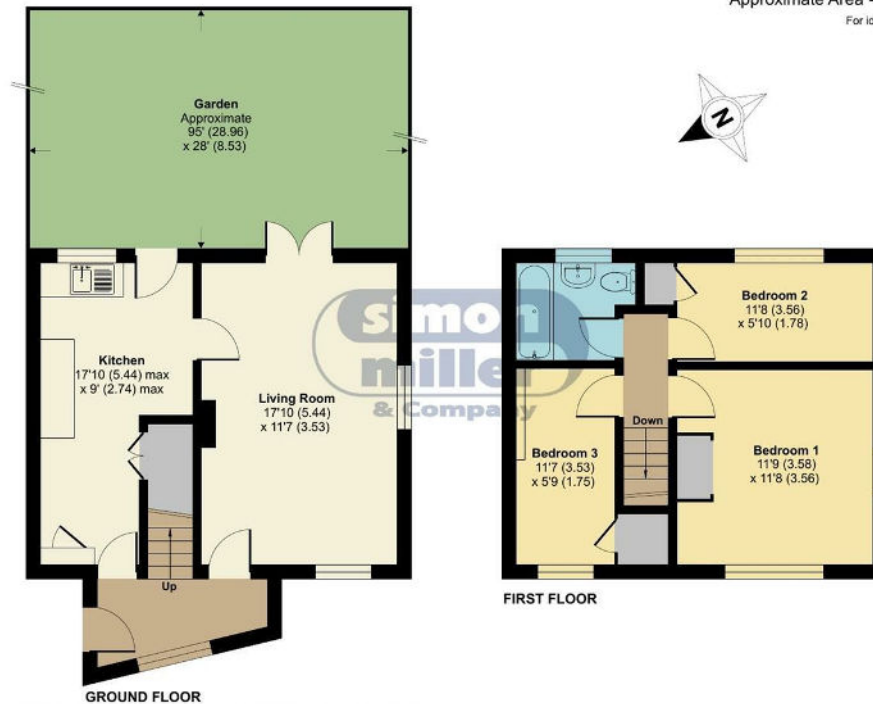



Local Authority Maidstone
Borough Council
Council Tax Band C
EPC Rating E

Willington Street, Maidstone, ME15

Approximate Area = 801 sq ft / 74 sq m

For identification only - Not to scale



  Floor plan produced in accordance with RICS Property Measurement Standards incorporating International Property Measurement Standards (IPMS2 Residential). © richcom 2022. Produced for Simon Miller & Company. REF: 900767

Maidstone & The Weald Office

11 Colman House, Colman Parade, King
Street, Maidstone, Kent, ME14 1DN

Contact

01622 691255
maidstonesales@simonmiller.co.uk

Agents Note: Whilst every care has been taken to prepare these particulars, they are for guidance purposes only. All measurements are approximate and for general guidance purposes only and whilst every care has been taken to ensure accuracy, they should not be relied upon and potential buyers/tenants are advised to recheck the measurements.

