



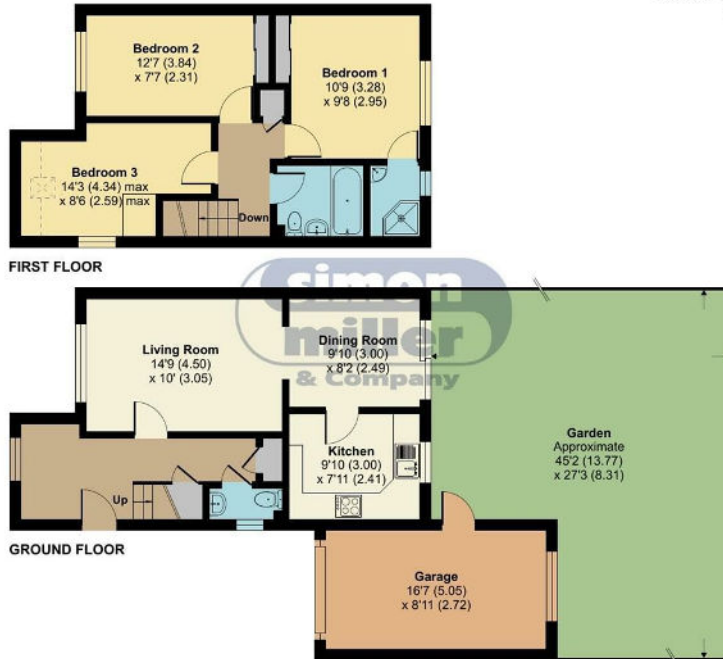
Franklin Drive

Weaving, Maidstone ME14 5SY

- Attractive Semi Detached Home
- Popular Grove Green Development
 - Garage & Own Driveway
 - Lounge and Dining Room
 - Close to Town Centre
- Quiet Residential Cul De Sac
- Modern Gas Central Heating
- Three Well Proportioned Bedrooms
 - Mature Private Garden
 - Offered Chain Free

Offers In Excess Of £375,000 Freehold

Local Authority Maidstone
Borough Council
Council Tax Band D
EPC Rating C



Weaving, Maidstone, ME14

Approximate Area = 1039 sq ft / 96.5 sq m (includes garage)
Limited Use Area(s) = 11 sq ft / 1 sq m
Total = 1050 sq ft / 97.5 sq m

For identification only - Not to scale

Denotes restricted head height



RICS Certified Property Measurer
Floor plan produced in accordance with RICS Property Measurement Standards incorporating International Property Measurement Standards (IPMS2 Residential). © nichecom 2022. Produced for Simon Miller & Company. REF: 932270

Maidstone & The Weald Office
11 Colman House, Colman Parade, King
Street, Maidstone, Kent, ME14 1DN

Contact
01622 691255
maidstonesales@simonmiller.co.uk

Agents Note: Whilst every care has been taken to prepare these particulars, they are for guidance purposes only. All measurements are approximate and for general guidance purposes only and whilst every care has been taken to ensure accuracy, they should not be relied upon and potential buyers/tenants are advised to recheck the measurements.