



## Hambrook Road

Holborough Lakes, Snodland ME6 5SQ

- Modern High Specification Coach House
  - Garage with Electric Opening
  - Spacious Accommodation
  - Juliette Balcony to Lounge
    - Available Immediately
- Popular Holborough Lakes Development
  - One Additional Car Parking Space
    - En Suite To Master Bedroom
  - All Integrated Appliances Included

**£1,300 PCM**

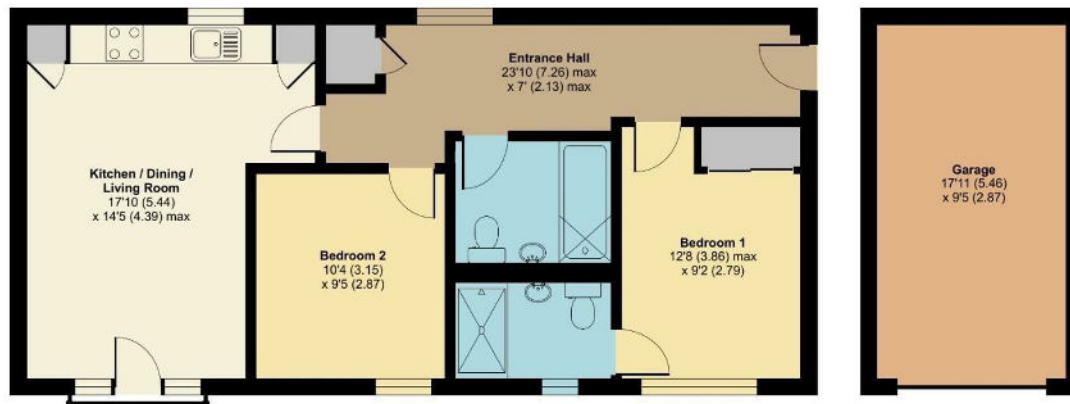
Local Authority Tonbridge and  
Malling Borough Council  
Council Tax Band C  
EPC Rating C



## Hambrook Road, Snodland, ME6

Approximate Area = 861 sq ft / 80 sq m (includes garage)

For identification only - Not to scale



FIRST FLOOR



Floor plan produced in accordance with RICS Property Measurement Standards incorporating International Property Measurement Standards (IPMS2 Residential). © richcom 2023. Produced for Simon Miller & Company. REF: 861524

### Lettings Office

Lettings Division, 779 London Road,  
Larkfield, Aylesford, Kent, ME20 6DE

### Contact

01732 875777  
lettings@simonmiller.co.uk  
<https://simonmiller.co.uk/landlo/services/>

Agents Note: Whilst every care has been taken to prepare these particulars, they are for guidance purposes only. All measurements are approximate and for general guidance purposes only and whilst every care has been taken to ensure accuracy, they should not be relied upon and potential buyers/tenants are advised to recheck the measurements.

