



Brickfields

, West Malling ME19 5AG

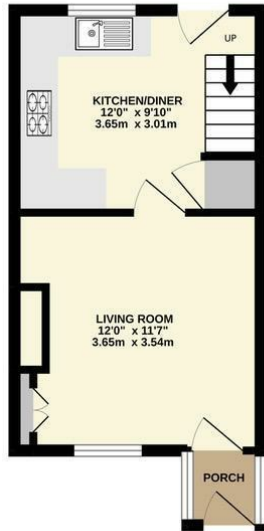
- GUIDE PRICE £375,000 - £400,000
- A THREE Bedroom Cottage
- Walking Distance to West Malling High Street
- Overlooking Countryside to Front
- Replaced Kitchen
- Front and Rear Gardens
- Off Road Parking to front

Offers In Excess Of £365,000 Freehold

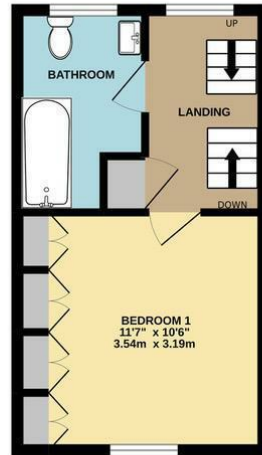


Local Authority
Council Tax Band C
EPC Rating D

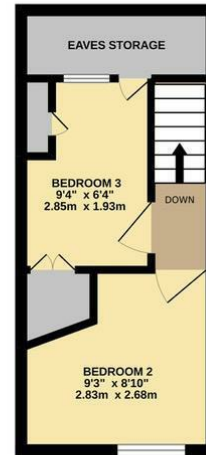
GROUND FLOOR
271 sq.ft. (25.1 sq.m.) approx.



1ST FLOOR
258 sq.ft. (23.9 sq.m.) approx.



2ND FLOOR
200 sq.ft. (18.5 sq.m.) approx.



TOTAL FLOOR AREA: 728 sq.ft. (67.6 sq.m.) approx.

Whilst every attempt has been made to ensure the accuracy of the floorplan contained here, measurements of doors, windows, rooms and any other items are approximate and no responsibility is taken for any error, omission or mis-statement. This plan is for illustrative purposes only and should be used as such by any prospective purchaser. The services, systems and appliances shown have not been tested and no guarantee as to their operability or efficiency can be given.
Made with Metropix ©2022

Malling Office

777 London Road, Larkfield, Aylesford,
Kent, ME20 6DE

Contact

01732 875706
larkfieldsales@simonmiller.co.uk
<https://simonmiller.co.uk/>

Agents Note: Whilst every care has been taken to prepare these particulars, they are for guidance purposes only. All measurements are approximate and for general guidance purposes only and whilst every care has been taken to ensure accuracy, they should not be relied upon and potential buyers/tenants are advised to recheck the measurements.

