



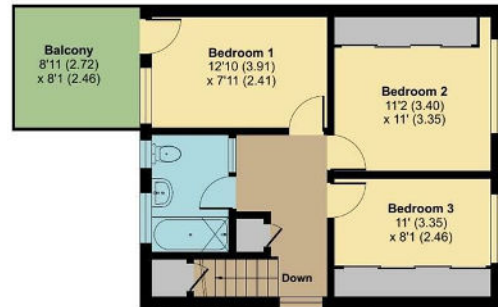
Talbot Road , Maidstone ME16 0HB

- Chain Free
- Garage And Off Street Parking
- In Need of Modernisation
- Sought After Allington Location

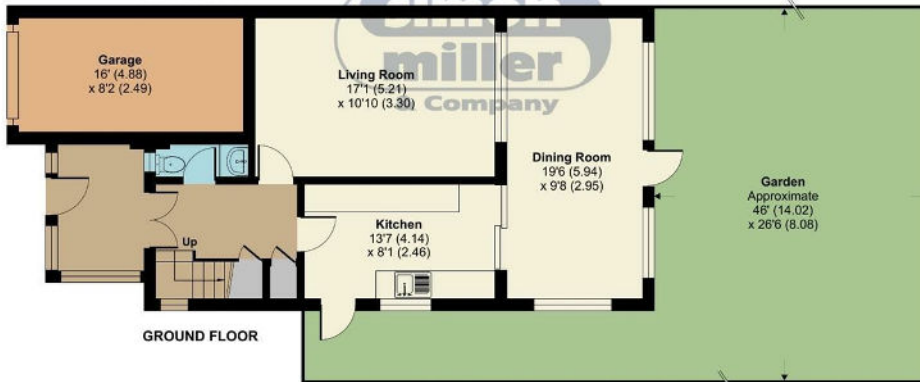
Offers In Excess Of £350,000 Freehold



Local Authority
Council Tax Band D
EPC Rating D



FIRST FLOOR



GROUND FLOOR

Talbot Road, Maidstone, ME16
Approximate Area = 1304 sq ft / 121.1 sq m (includes garage)
For identification only - Not to scale



Denotes restricted
head height

Floor plan produced in accordance with RICS Property Measurement Standards incorporating International Property Measurement Standards (IPMS2 Residential). © nichecom 2023. Produced for Simon Miller & Company. REF: 978447



Maidstone & The Weald Office
11 Colman House, Colman Parade, King
Street, Maidstone, Kent, ME14 1DJ

Contact
01622 691255
maidstonesales@simonmiller.co.uk

Agents Note: Whilst every care has been taken to prepare these particulars, they are for guidance purposes only. All measurements are approximate and for general guidance purposes only and whilst every care has been taken to ensure accuracy, they should not be relied upon and potential buyers/tenants are advised to recheck the measurements.