



Lettings



## Crossfield Walk

, Snodland ME6 5SE

- Fantastic sought after location
  - Integrated appliances
  - Ensuite shower room
  - Available immediately!
- Two Double Bedrooms
  - Unfurnished
- Allocated parking for one car

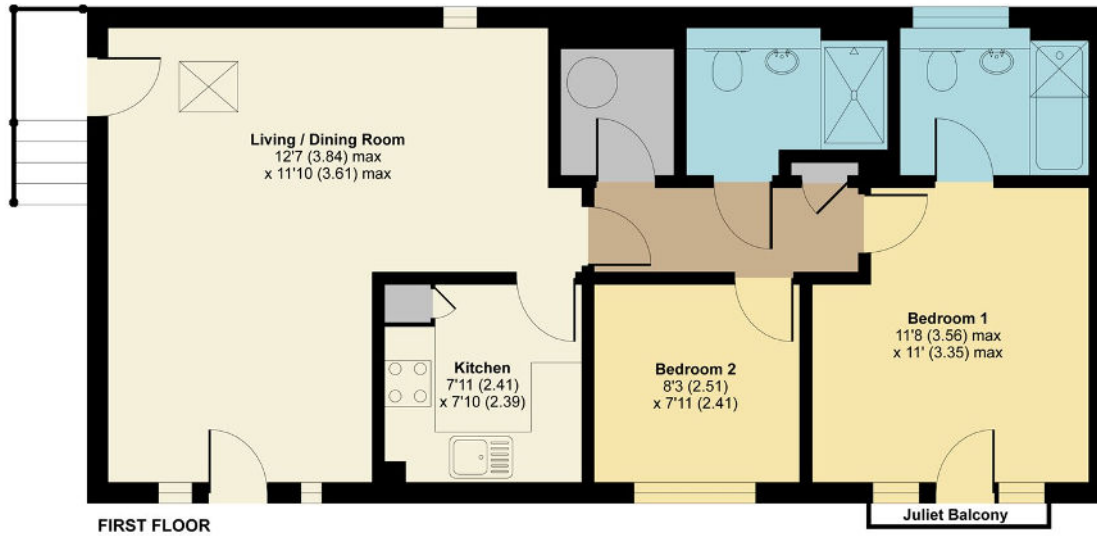
**£1,350 PCM**



Local Authority  
Council Tax Band C  
EPC Rating D

## Crossfield Walk, Snodland, ME6

Total = 697 sq ft / 64.8 sq m  
For identification only - Not to scale



Floor plan produced in accordance with RICS Property Measurement Standards incorporating International Property Measurement Standards (IPMS2 Residential). ©richecom 2021. Produced for Simon Miller & Company. REF: 705827



### Lettings Office

Lettings Division, 779 London Road,  
Larkfield, Aylesford, Kent, ME20 6DE

### Contact

01732 875706  
lettings@simonmiller.co.uk  
<https://simonmiller.co.uk/landlo/services/>

Agents Note: Whilst every care has been taken to prepare these particulars, they are for guidance purposes only. All measurements are approximate and for general guidance purposes only and whilst every care has been taken to ensure accuracy, they should not be relied upon and potential buyers/tenants are advised to recheck the measurements.