



Lettings



The Mews

High Street, Headcorn TN27 9NE

- Spacious Split Level Apartment
- Generous Lounge/Dining Room
 - Study
- Gas Central Heating Throughout
- Allocated Parking for Two Cars
- Three Good Sized Bedrooms
 - Fitted Kitchen
- Guest Cloakroom and Family Bathroom
- Heart of the Village Location
- Available beginning of August!

£1,150 PCM

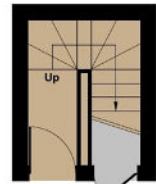
Local Authority Maidstone
Borough Council
Council Tax Band D
EPC Rating



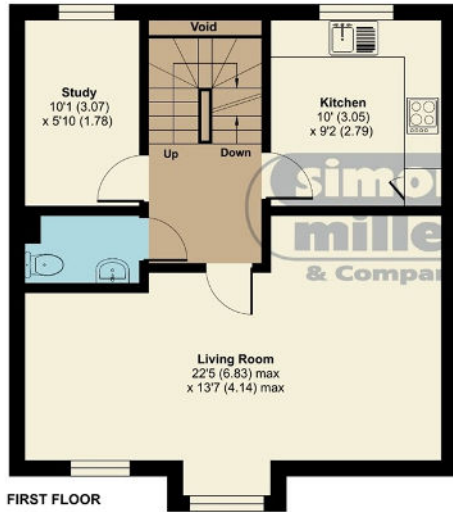
The Mews, High Street, Headcorn, Ashford, TN27

Approximate Area = 1074 sq ft / 100 sq m (excludes void)
Limited Use Area(s) = 17 sq ft / 2 sq m
Total = 1091 sq ft / 102 sq m
For identification only - Not to scale

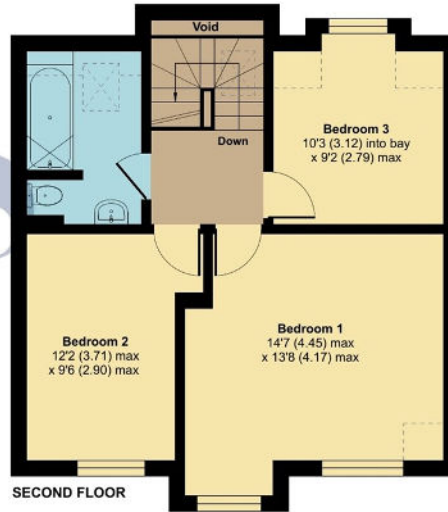
Denotes restricted
head height



GROUND FLOOR



FIRST FLOOR



SECOND FLOOR



Floor plan produced in accordance with RICS Property Measurement Standards incorporating International Property Measurement Standards (IPMS2 Residential). © nichecom 2022. Produced for Simon Miller & Company. REF: 807095

Lettings Office

Lettings Division, 779 London Road,
Larkfield, Aylesford, Kent, ME20 6DE

Contact

01732 875706
lettings@simonmiller.co.uk
<https://simonmiller.co.uk/landlo/services/>

Agents Note: Whilst every care has been taken to prepare these particulars, they are for guidance purposes only. All measurements are approximate and for general guidance purposes only and whilst every care has been taken to ensure accuracy, they should not be relied upon and potential buyers/tenants are advised to recheck the measurements.