



Village Road

Wouldham, Rochester ME1 3FJ

- CHAIN FREE
- Four Fantastic Sized Rooms
 - River Views
- Within Close Proximity Of Amenities And Travel Links
- **OVER 1500 SqFT OF LIVING ACCOMODATION**
- West Facing Rear Garden
- Popular 'Peters Village' Location
- Three Bathrooms

Asking Price £400,000 Freehold

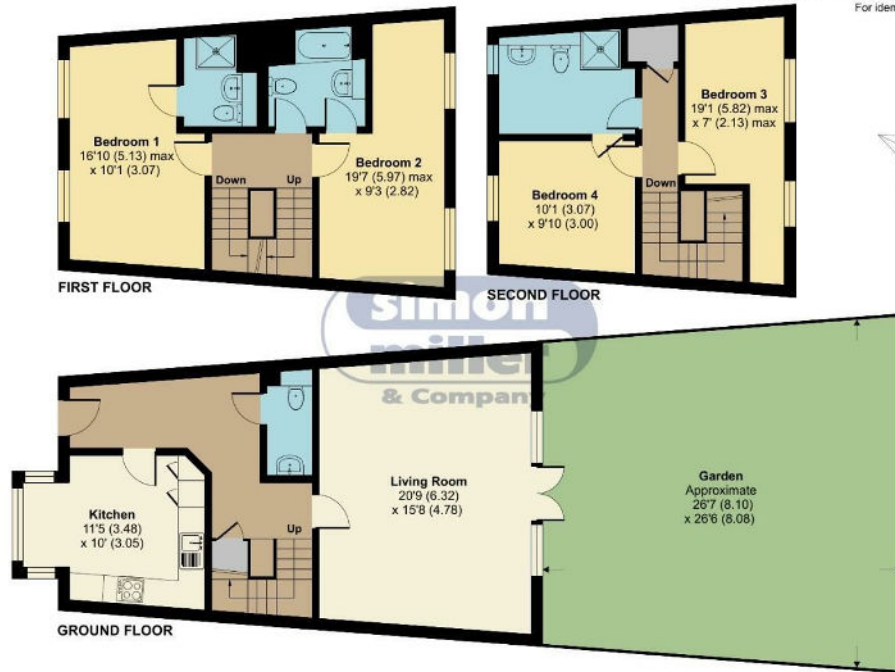


Local Authority
Council Tax Band D
EPC Rating B

Village Road, Wouldham, Rochester, ME1

Approximate Area = 1516 sq ft / 140.8 sq m

For identification only - Not to scale



Floor plan produced in accordance with RICS Property Measurement Standards incorporating International Property Measurement Standards (IPMS2 Residential). © richcom 2023. Produced for Simon Miller & Company. REF: 1006736



Malling Office
777 London Road, Larkfield, Aylesford,
Kent, ME20 6DE

Contact
01732 875706
larkfieldsales@simonmiller.co.uk
<https://simonmiller.co.uk/>

Agents Note: Whilst every care has been taken to prepare these particulars, they are for guidance purposes only. All measurements are approximate and for general guidance purposes only and whilst every care has been taken to ensure accuracy, they should not be relied upon and potential buyers/tenants are advised to recheck the measurements.