



Lettings



## Poplar Close

Ashford Road, Maidstone ME14 4FA

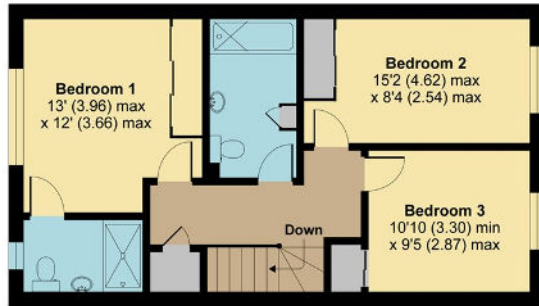
- Private Gated Community
- Fantastic Location
- High Spec Finishing
- Gentle Neutral décor throughout
- Stunning Family Home
- Beautiful Open Plan Living
- Legrand Home Automation System
- Available immediately

**£1,875 PCM**

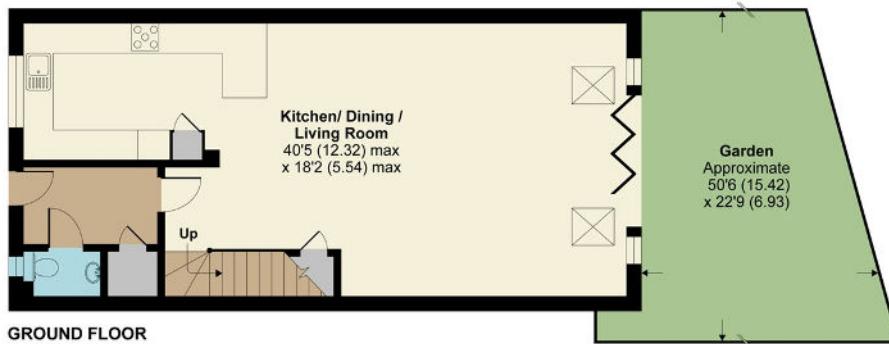
Local Authority Maidstone  
Borough Council  
Council Tax Band E  
EPC Rating B

### Ashford Road, Maidstone, ME14

Approximate Area = 1365 sq ft / 126.8 sq m  
For identification only - Not to scale



FIRST FLOOR



GROUND FLOOR



Floor plan produced in accordance with RICS Property Measurement Standards incorporating International Property Measurement Standards (IPMS2 Residential). ©nichecom 2021. Produced for Simon Miller & Company. REF: 702872



#### Lettings Office

Lettings Division, 779 London Road,  
Larkfield, Aylesford, Kent, ME20 6DE

#### Contact

01732 875706  
lettings@simonmiller.co.uk  
<https://simonmiller.co.uk/landlo/services/>

Agents Note: Whilst every care has been taken to prepare these particulars, they are for guidance purposes only. All measurements are approximate and for general guidance purposes only and whilst every care has been taken to ensure accuracy, they should not be relied upon and potential buyers/tenants are advised to recheck the measurements.