

## Campbell Road

, Maidstone ME15 6PY

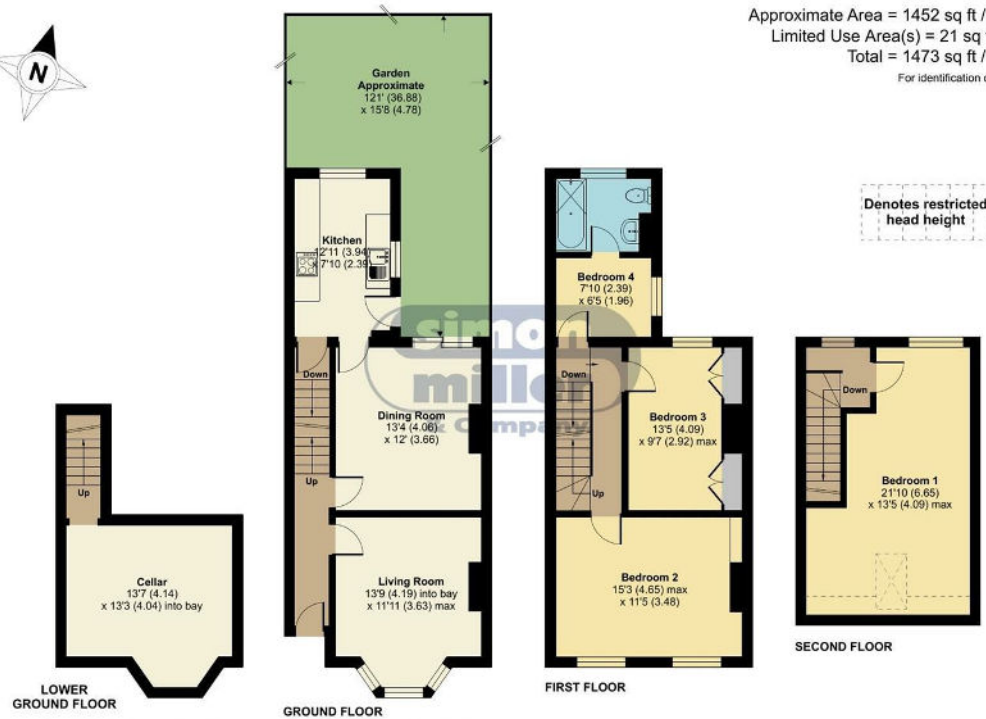
- GUIDE PRICE £290,000 - £300,000
  - Useful Cellar
- Near Excellent Transport Links
  - Three Double Bedrooms
- Two Reception Rooms
- Close To Town Centre
- Additional Office/Bedroom 4

**Guide Price £290,000 Freehold**

Local Authority  
Council Tax Band C  
EPC Rating E

## Campbell Road, Maidstone, Kent, ME15

Approximate Area = 1452 sq ft / 134.8 sq m  
Limited Use Area(s) = 21 sq ft / 1.9 sq m  
Total = 1473 sq ft / 136.7 sq m  
For identification only - Not to scale



Floor plan produced in accordance with RICS Property Measurement Standards incorporating International Property Measurement Standards (IPMS2 Residential). © nichecom 2023. Produced for Simon Miller & Company. REF: 1024706



**Maidstone & The Weald Office**  
11 Colman House, Colman Parade, King  
Street, Maidstone, Kent, ME14 1DN

**Contact**  
01622 691255  
maidstonesales@simonmiller.co.uk

Agents Note: Whilst every care has been taken to prepare these particulars, they are for guidance purposes only. All measurements are approximate and for general guidance purposes only and whilst every care has been taken to ensure accuracy, they should not be relied upon and potential buyers/tenants are advised to recheck the measurements.