



Bushy Grove

Kingswood, Maidstone ME17 3QL

- Exceptional Extended Family Home
- Spacious Lounge and Dining Room
- Garden Room with Separate Shower Room
Offering Exceptional Outdoor Entertaining Space
- Quiet Village Location
- Luxurious Kitchen/Breakfast Room
- En-Suite, Family Bathroom and Downstairs Cloakroom
- Off Street Parking
- Chain Free

Asking Price £550,000 Freehold

Local Authority Maidstone
Council Tax Band D
EPC Rating B



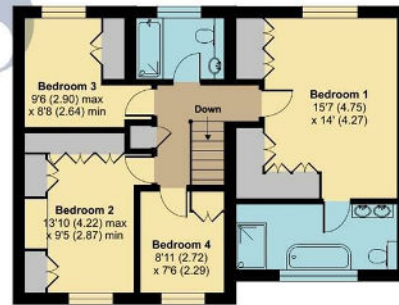
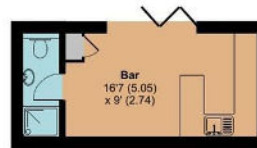
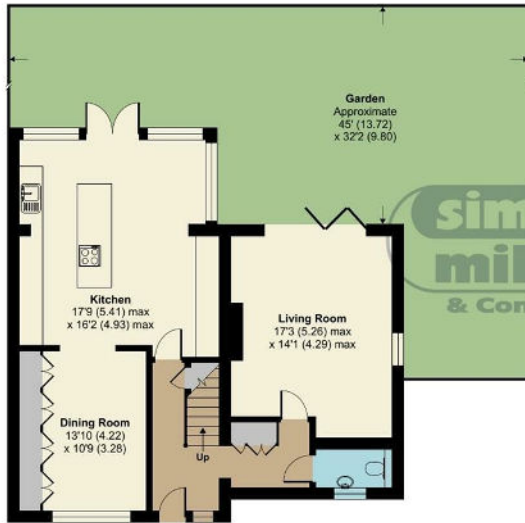
Bushey Grove, Kingswood, Kent, ME17

Approximate Area = 1615 sq ft / 150 sq m

Outbuilding = 183 sq ft / 17 sq m

Total = 1798 sq ft / 167 sq m

For identification only - Not to scale



 Floor plan produced in accordance with RICS Property Measurement Standards incorporating International Property Measurement Standards (IPMS2 Residential). © nichecom 2023. Produced for Simon Miller & Company. REF: 1037799

Maidstone & The Weald Office
11 Colman House, Colman Parade, King
Street, Maidstone, Kent, ME14 1DJ

Contact
01622 691255
maidstonesales@simonmiller.co.uk

Agents Note: Whilst every care has been taken to prepare these particulars, they are for guidance purposes only. All measurements are approximate and for general guidance purposes only and whilst every care has been taken to ensure accuracy, they should not be relied upon and potential buyers/tenants are advised to recheck the measurements.