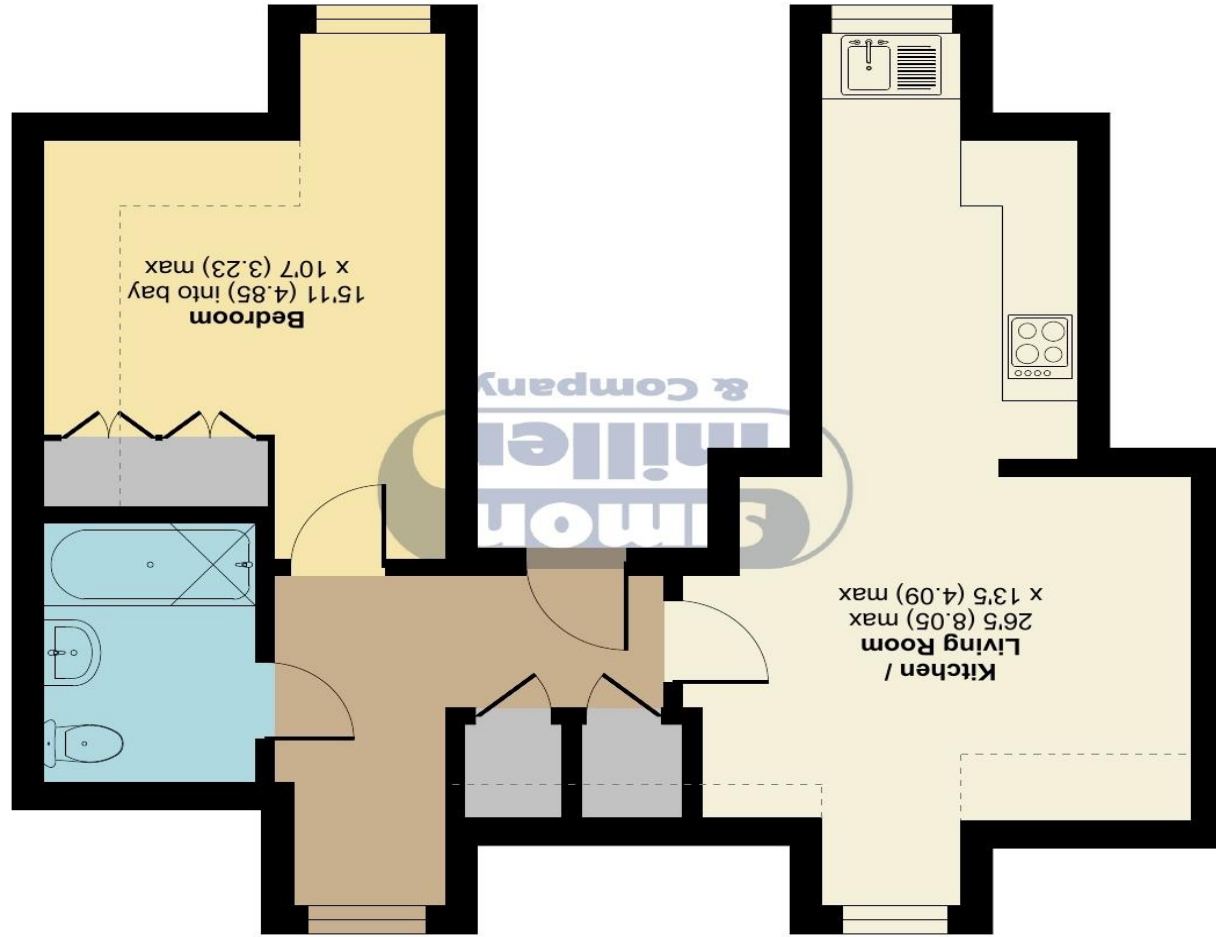


SECOND FLOOR



Approximate Area = 450 sq ft / 41.8 sq m
Limited Use Area(s) = 54 sq ft / 5 sq m
Total = 504 sq ft / 46.8 sq m
For identification only - Not to scale

Roman Way, Maidstone, ME17

OFFERS IN EXCESS OF £160,000

34 ROMAN WAY, BOUGHTON MONCHELSEA, ME17 4SG

EPC RATING: C





Covering the whole top floor, this one bedroom apartment is an ideal purchase for a first time buyer or buy to let investor. Available for your immediate viewing! Rarely does a property such as this become available and so your early viewing is highly recommended. The generous accommodation of this wonderful home comprises; communal entrance, stairs to apartment, entrance hall, spacious double aspect sitting room leading through to the modern fitted kitchen area with space for breakfast table, a generous bedroom, a study area within the entrance hall, and a family bathroom with white suite completes the internal accommodation. Externally the property benefits from parking.

MATERIAL INFORMATION

**Leasehold
Council Tax Band (B)
EPC Report (C)**



- **IDEAL FIRST TIME BUY OR INVESTMENT**
- **POPULAR BOUGHTON MONCHELSEA LOCATION**
- **INTERNAL VIEWING A MUST!**

- **NEARBY LOCAL AMENITIES**
- **MODERN FITTED KITCHEN**
- **FAMILY BATHROOM WITH WHITE ENSUITE**

KS3031 180923/080224M

Agents Note: All dimensions are approximate and quoted for guidance only. Reference to appliances, fixtures, fittings and services does not imply that they are necessarily in good condition, fit the purpose or are in working order. Interested parties are advised to obtain verification from their Solicitors as to the Freehold/Leasehold status of the property and confirmation regarding the condition of any fixtures and fittings included in the sale.

36 KING STREET, MAIDSTONE, KENT, ME14 1BS | 01622 691255 | MAIDSTONE@SIMONMILLER.CO.UK