



Norman Road , West Malling ME19 6RN

- Prime West Malling Location
- SOUTH Facing Rear Garden
- Modern Family Bathroom
- Open Plan Kitchen / Diner
- Log Burning Stove
- Master Bedroom With Fantastic Views Over Maceys Meadow

Offers In Excess Of £500,000 Freehold

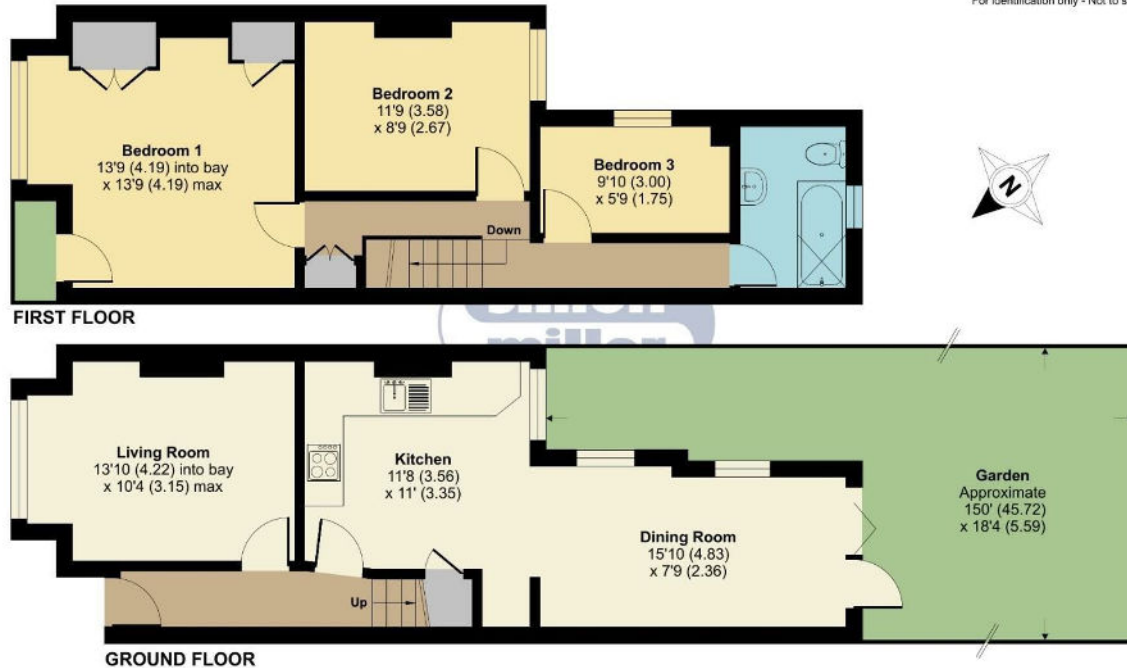


Local Authority
Council Tax Band E
EPC Rating D

Norman Road, West Malling, ME19

Approximate Area = 940 sq ft / 87.3 sq m

For identification only - Not to scale



 Floor plan produced in accordance with RICS Property Measurement Standards incorporating International Property Measurement Standards (IPMS2 Residential). © richcom 2023. Produced for Simon Miller & Company. REF: 1043874



Malling Office
777 London Road, Larkfield, Aylesford,
Kent, ME20 6DE

Contact
01732 875706
larkfieldsales@simonmiller.co.uk
<https://simonmiller.co.uk/>

Agents Note: Whilst every care has been taken to prepare these particulars, they are for guidance purposes only. All measurements are approximate and for general guidance purposes only and whilst every care has been taken to ensure accuracy, they should not be relied upon and potential buyers/tenants are advised to recheck the measurements.