



Lettings



The Lakes

Larkfield, Aylesford ME20 6GY

- Outstanding Lake Views
 - Allocated Parking
- Popular 'Leybourne Lakes' Development
 - Master Bedroom With En-Suite
- Double Balcony
- Three Good Sized Bedrooms
- 1000Sq Ft Of Living Accommodation
- Available Immediately!

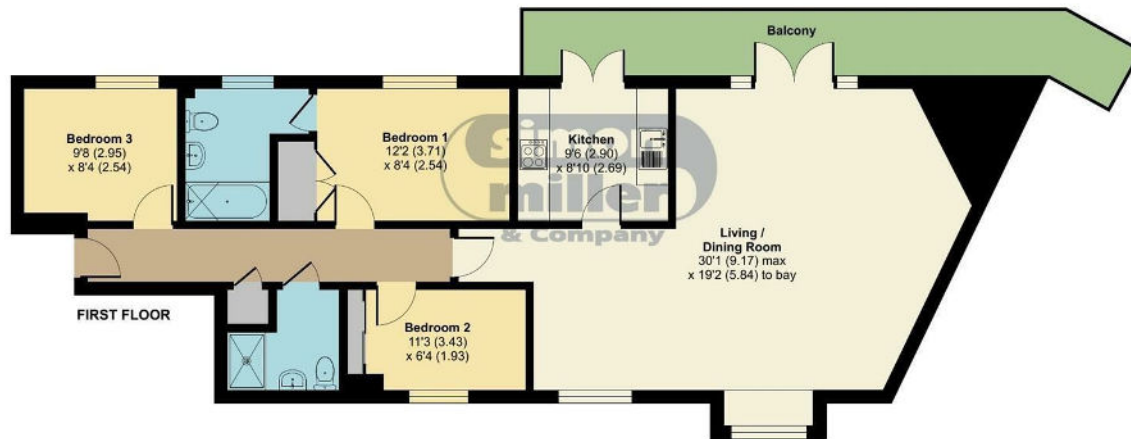
£1,400 PCM

Local Authority Tonbridge and
Malling Borough Council
Council Tax Band D
EPC Rating C

Larkfield, Aylesford, ME20

Approximate Area = 1000 sq ft / 92.9 sq m

For identification only - Not to scale



 Floor plan produced in accordance with RICS Property Measurement Standards incorporating International Property Measurement Standards (IPMS2 Residential). © richecom 2022. Produced for Simon Miller & Company. REF: 867872

Lettings Office

Lettings Division, 779 London Road,
Larkfield, Aylesford, Kent, ME20 6DE

Contact

01732 875777
lettings@simonmiller.co.uk
<https://simonmiller.co.uk/landlo/services/>

Agents Note: Whilst every care has been taken to prepare these particulars, they are for guidance purposes only. All measurements are approximate and for general guidance purposes only and whilst every care has been taken to ensure accuracy, they should not be relied upon and potential buyers/tenants are advised to recheck the measurements.

