



Lettings



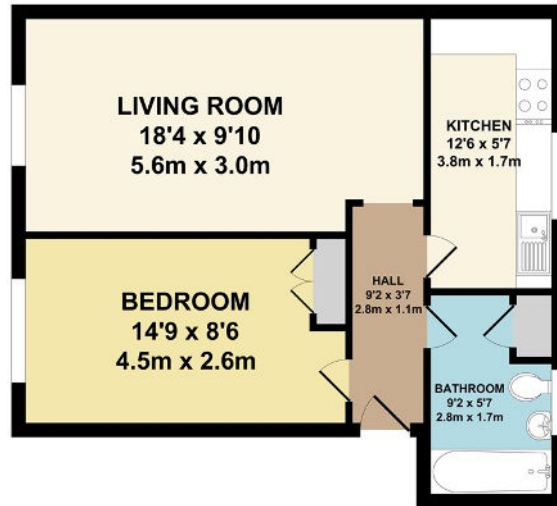
Lesley Place

Buckland Hill, Maidstone ME16 0TZ

- First Floor Apartment
- Double Bedroom With Fitted Wardrobe
- Allocated Parking Space
- Available Beginning of December
- Well Presented Throughout
- Furnished With Bed & Furniture and Living Room Furniture
- Walking Distance to Town Centre

£875 PCM

Local Authority Maidstone
Borough Council
Council Tax Band B
EPC Rating C



TOTAL APPROX. FLOOR AREA 472 SQ.FT. (43.88 SQ.M.)

Whilst every attempt has been made to ensure the accuracy of the floor plan contained here, measurements of doors, windows, rooms and any other items are approximate and no responsibility is taken for any error, omission or mis-statement. This plan is for illustrative purposes only and should be used as such by any prospective purchaser. The services, systems and appliances shown have not been tested and no guarantee as to their operability or efficiency can be given.
Red Hot Camera ©2015



Lettings Office

Lettings Division, 779 London Road,
Larkfield, Aylesford, Kent, ME20 6DE

Contact

01732 875777
lettings@simonmiller.co.uk
<https://simonmiller.co.uk/landlo/services/>

Agents Note: Whilst every care has been taken to prepare these particulars, they are for guidance purposes only. All measurements are approximate and for general guidance purposes only and whilst every care has been taken to ensure accuracy, they should not be relied upon and potential buyers/tenants are advised to recheck the measurements.