



Upper Road , Maidstone ME15 7RD

- GUIDE PRICE £290,000 - £310,000
- Two Reception Rooms
- Chain Free
- Spacious Family Home
- Good Sized Gardens
- Walking Distance To Mote Park & Leisure Centre

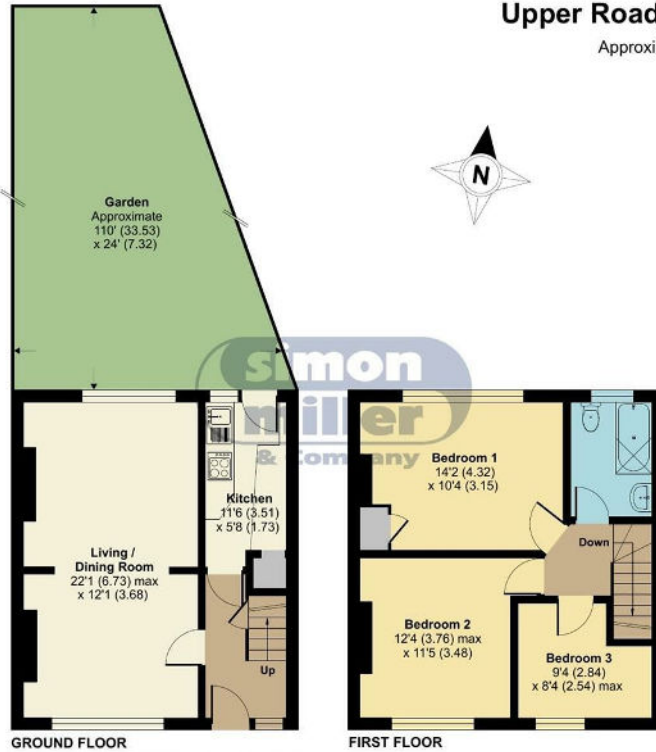
Guide Price £290,000 Freehold

Local Authority
Council Tax Band C
EPC Rating E

Upper Road, Maidstone, ME15

Approximate Area = 850 sq ft / 78.9 sq m

For identification only - Not to scale



Floor plan produced in accordance with RICS Property Measurement Standards incorporating International Property Measurement Standards (IPMS2 Residential). © nichecom 2023. Produced for Simon Miller & Company. REF: 1057587



Maidstone & The Weald Office

11 Colman House, Colman Parade, King
Street, Maidstone, Kent, ME14 1DJ

Contact

01622 691255
maidstonesales@simonmiller.co.uk

Agents Note: Whilst every care has been taken to prepare these particulars, they are for guidance purposes only. All measurements are approximate and for general guidance purposes only and whilst every care has been taken to ensure accuracy, they should not be relied upon and potential buyers/tenants are advised to recheck the measurements.