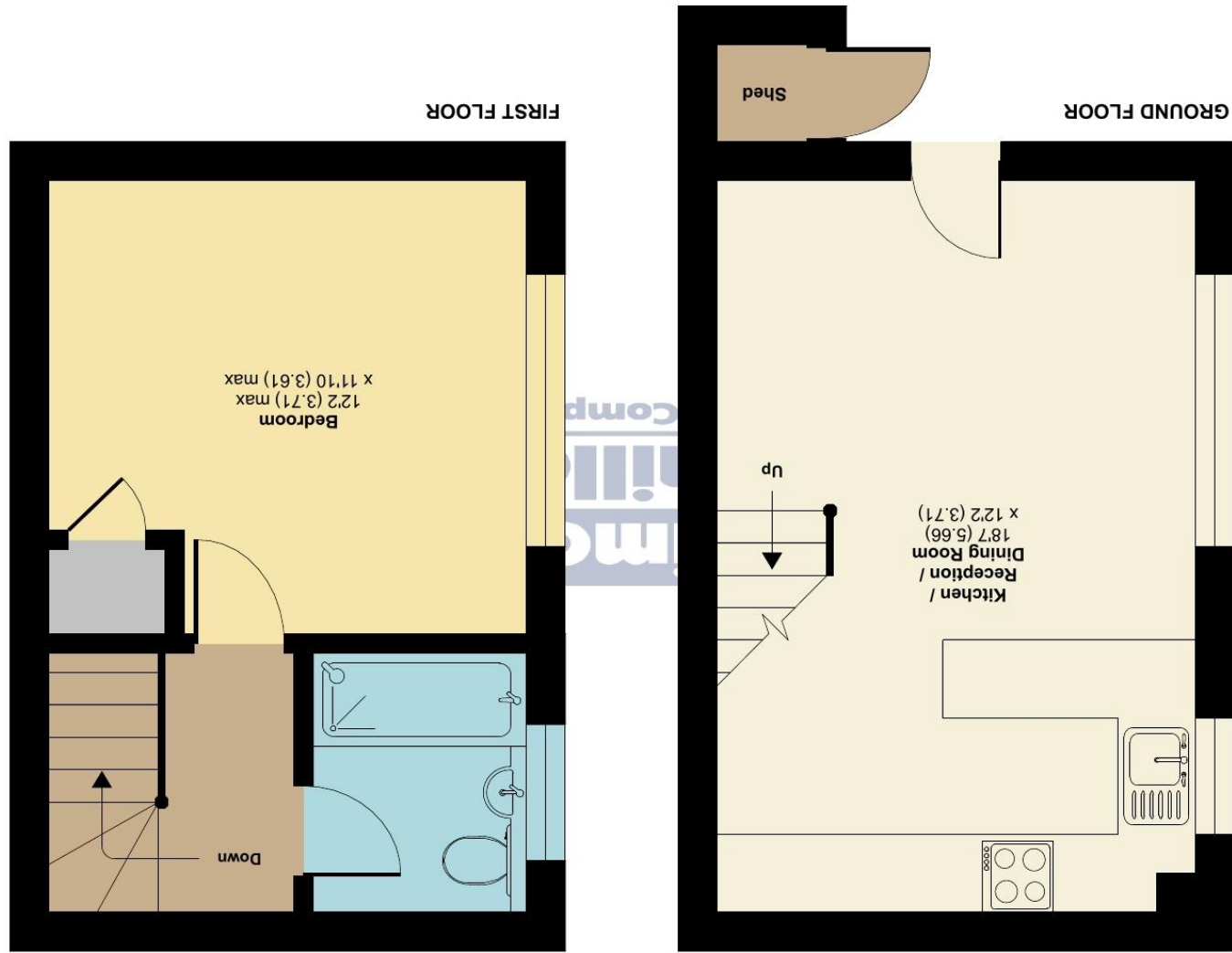


Floor plan produced in accordance with RICS Property Measurement Standards incorporating International Property Measurement Standards (IPMS2 Residential). © nichecom 2023. Produced for Simon Miller & Company. REF: 1057880



Approximate Area = 469 sq ft / 43.6 sq m (includes shed)  
For identification only - Not to scale

### Sheridan Close, Maidstone, ME14

**GUIDE PRICE £185,000 - £195,000**

**EPC RATING: E**

## 20 SHERIDAN CLOSE, MAIDSTONE, ME14 2QP







**The perfect location for those looking for easy motorway access in the heart of Maidstone with walkable amenities nearby! This one-bedroom end terraced home comes with an allocated parking space and large front garden. Mainline stations with links to London are in close proximity, enhancing the desirability of the property.**

**Ideal for First Time Buyers looking for the first step on the property ladder the home boasts a flexible open plan kitchen lounge/diner with sufficient storage facilities.**

**Take the stairs and find a modern bathroom alongside a sizeable master bedroom. The prospective purchaser will have very little to do in what has been a very well-kept home.**

**To appreciate what this rarely available property has to offer we encourage a viewing at your earliest convenience to avoid disappointment!**

#### **MATERIAL INFORMATION**

**Council Tax Band (B)  
EPC Report (E)**



- **ALLOCATED PARKING**
- **LARGE MASTER BEDROOM**
- **FLEXIBLE LIVING ACCOMMODATION**

- **EASY MOTORWAY ACCESS**
- **AVAILABLE TO VIEW IMMEDIATELY**
- **CLOSE TO LOCAL AMENITIES**

WA3047 091123M

Agents Note: All dimensions are approximate and quoted for guidance only. Reference to appliances, fixtures, fittings and services does not imply that they are necessarily in good condition, fit the purpose or are in working order. Interested parties are advised to obtain verification from their Solicitors as to the Freehold/Leasehold status of the property and confirmation regarding the condition of any fixtures and fittings included in the sale.

36 KING STREET, MAIDSTONE, KENT, ME14 1BS | 01622 691255 | MAIDSTONE@SIMONMILLER.CO.UK