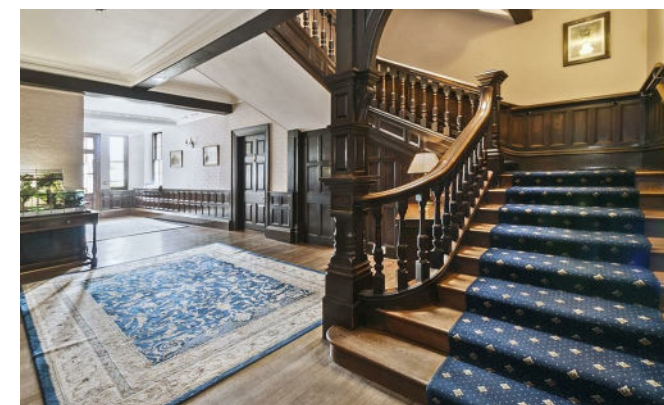


PERIOD HOMES

By Simon Miller



The Manor

Cripple Street, Maidstone ME15 6DW

- Beautifully Presented Throughout
- Spacious First Floor Apartment in this Grade II Listed Manor House
- Bright and Airy Lounge/Dining Room with Attractive Feature Fireplace & Panelled Walls
- Bespoke Fitted Kitchen with Breakfast Bar
- Two Generous Double Bedrooms
- Gas Central Heating Throughout
- Exceptional Mature Communal Grounds of Approx 2 Acres
- Luxurious Bathroom with Feature Tiled Walls & Floor
- Large Private Car Park PLUS Single Garage
- Offered Chain Free

£300,000 Leasehold

Local Authority
Council Tax Band C
EPC Rating

The Manor, Hayle Place, Cripple Street, Maidstone, ME15

Approximate Area = 1047 sq ft / 97.2 sq m
Garage = 128 sq ft / 11.8 sq m
Total = 1303 sq ft / 121 sq m
For identification only - Not to scale



FIRST FLOOR



Floor plan produced in accordance with RICS Property Measurement Standards incorporating International Property Measurement Standards (IPMS2 Residential). ©richecom 2021. Produced for Simon Miller & Company. REF: 708747

Period Homes by Simon Miller Office
Weald, 5 High Street, Headcorn, Ashford,
Kent, TN27 9NH

Contact

01622 850888
admin@periodhomesbysimonmiller.co.uk
<https://simonmiller.co.uk/period-homes/>

Agents Note: Whilst every care has been taken to prepare these particulars, they are for guidance purposes only. All measurements are approximate and for general guidance purposes only and whilst every care has been taken to ensure accuracy, they should not be relied upon and potential buyers/tenants are advised to recheck the measurements.

