



## Maidstone Road

Watringbury, Maidstone ME18 5EJ

- Guide Price £450,000/£475,000
- Immaculately Presented FOUR Bedroom Family Home
- Secluded 'off road' Setting
- Enclosed Rear Garden with Office/Studio Room
- One Parking Space
- Walking Distance to the Train Station

**Guide Price £450,000 Freehold**

Local Authority  
Council Tax Band D  
EPC Rating D

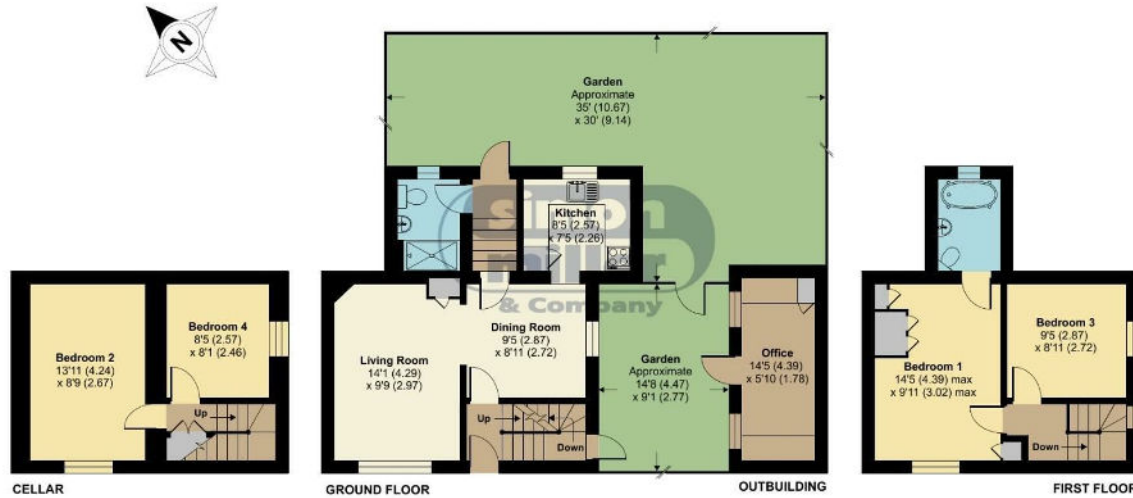
## Maidstone Road, Watringbury, Maidstone, ME18


Approximate Area = 1020 sq ft / 94.7 sq m

Outbuilding = 84 sq ft / 7.8 sq m

Total = 1104 sq ft / 102.5 sq m

For identification only - Not to scale



 Floor plan produced in accordance with RICS Property Measurement Standards incorporating International Property Measurement Standards (IPMS2 Residential). © nichecom 2023. Produced for Simon Miller & Company. REF: 1054861

### Malling Office

777 London Road, Larkfield, Aylesford,  
Kent, ME20 6DE

### Contact

01732 875706  
larkfieldsales@simonmiller.co.uk  
<https://simonmiller.co.uk/>

Agents Note: Whilst every care has been taken to prepare these particulars, they are for guidance purposes only. All measurements are approximate and for general guidance purposes only and whilst every care has been taken to ensure accuracy, they should not be relied upon and potential buyers/tenants are advised to recheck the measurements.