



Stockbury Drive , Maidstone ME16 0RW

- Two Bedroom Mid-Terraced Home
 - Fitted Kitchen
 - Gas Fired Central Heating
 - Very Well Presented Throughout.
- Easy Access to Junction 5 of the M20
- Spacious Lounge/Dining Room
 - Modern Bathroom Suite
 - Covered Patio Area
- Convenient For Allington Parade Shops
- One Parking Space And A Garage With Space For One Car

Offers In Excess Of £300,000 Freehold

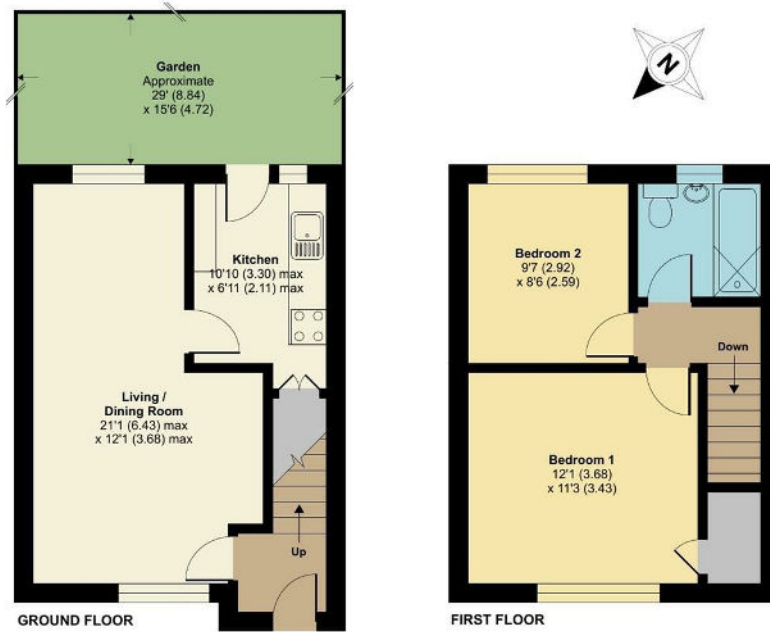



Local Authority
Council Tax Band C
EPC Rating D

Stockbury Drive, Maidstone, ME16

Approximate Area = 663 sq ft / 61.5 sq m

For identification only - Not to scale



 Floor plan produced in accordance with RICS Property Measurement Standards incorporating International Property Measurement Standards (IPMS2 Residential). © richecom 2022. Produced for Simon Miller & Company. REF: 805291

Maidstone & The Weald Office
11 Colman House, Colman Parade, King
Street, Maidstone, Kent, ME14 1DJ

Contact
01622 691255
maidstonesales@simonmiller.co.uk

Agents Note: Whilst every care has been taken to prepare these particulars, they are for guidance purposes only. All measurements are approximate and for general guidance purposes only and whilst every care has been taken to ensure accuracy, they should not be relied upon and potential buyers/tenants are advised to recheck the measurements.

