



Holborough Road

, Snodland ME6 5PB

- A One Bedroom Starter Home
- Small Garden area to Front
- Popular Residential Location
- NO ONWARD CHAIN
- Allocated Parking Space
- Good Access to Local Amenities

Offers In Excess Of £180,000 Leasehold

Local Authority
Council Tax Band B
EPC Rating C



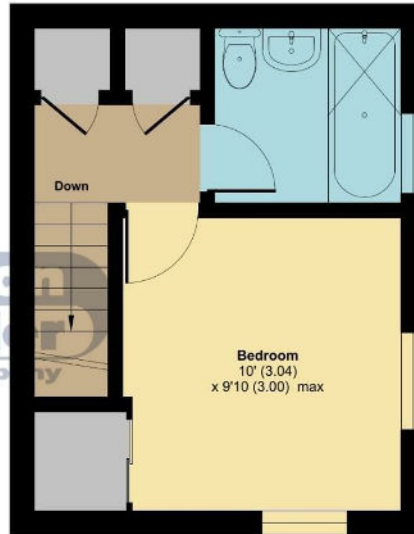
Holborough Road, Snodland, ME6

Approximate Area = 414 sq ft / 38.4 sq m

For identification only - Not to scale



GROUND FLOOR



FIRST FLOOR



Floor plan produced in accordance with RICS Property Measurement Standards incorporating International Property Measurement Standards (IPMS2 Residential). © richcom 2024. Produced for Simon Miller & Company. REF: 1075718

Malling Office

777 London Road, Larkfield, Aylesford,
Kent, ME20 6DE

Contact

01732 875706
larkfieldsales@simonmiller.co.uk
<https://simonmiller.co.uk/>

Agents Note: Whilst every care has been taken to prepare these particulars, they are for guidance purposes only. All measurements are approximate and for general guidance purposes only and whilst every care has been taken to ensure accuracy, they should not be relied upon and potential buyers/tenants are advised to recheck the measurements.

