



## Bishops Close

Nettlestead, Maidstone ME18 5ES

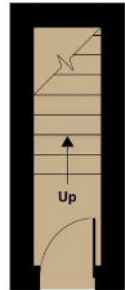
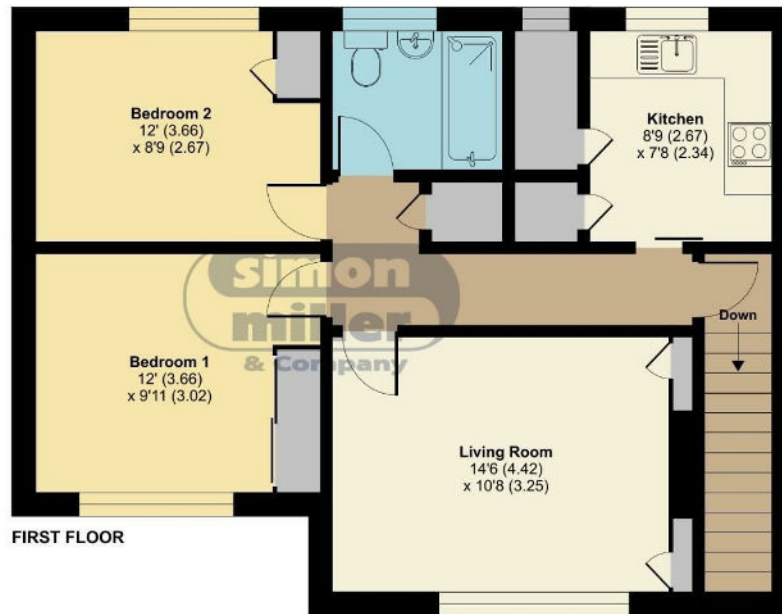
- A TWO Bedroom First Floor Maisonette
  - Recently Replaced Kitchen
- Popular Village Location and CLOSE TO THE STATION
- GUIDE PRICE: £200,000-£220,000
- Own Gardens to Front and Rear
  - Two DOUBLE Bedrooms
  - Vacant Possession Available

**Guide Price £200,000 Leasehold**

Local Authority  
Council Tax Band B  
EPC Rating D

## Bishops Close, Maidstone, ME18

Approximate Area = 704 sq ft / 65.4 sq m  
For identification only - Not to scale



GROUND FLOOR



Floor plan produced in accordance with RICS Property Measurement Standards incorporating International Property Measurement Standards (IPMS2 Residential). © richcom 2024. Produced for Simon Miller & Company. REF: 107526



**Malling Office**  
777 London Road, Larkfield, Aylesford,  
Kent, ME20 6DE

**Contact**  
01732 875706  
larkfieldsales@simonmiller.co.uk  
<https://simonmiller.co.uk/>

Agents Note: Whilst every care has been taken to prepare these particulars, they are for guidance purposes only. All measurements are approximate and for general guidance purposes only and whilst every care has been taken to ensure accuracy, they should not be relied upon and potential buyers/tenants are advised to recheck the measurements.