



The Pump House

Forstal Road, Aylesford ME20 7AU

- Stunning River Views
- Over 1450 Sq Ft Of Accommodation
- Double Garage AND Allocated Parking
- GUIDE PRICE: £325,000-£350,000
- Modern And Contemporary Throughout
- En Suite Bathroom and Additional Family Bathroom
- Converted Storage Facility Into Gym / Bar

Guide Price £325,000 Leasehold

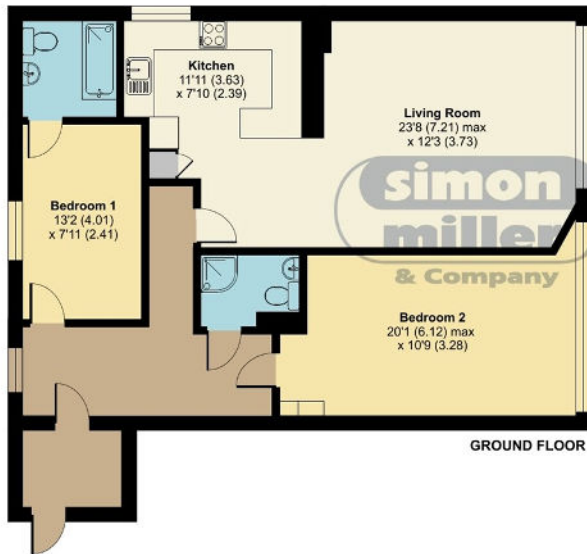
Local Authority Tonbridge and
Malling Borough Council
Council Tax Band D
EPC Rating



The Pump House, Forstal Road, Aylesford, ME20

Approximate Area = 1036 sq ft / 96.2 sq m
Garage = 286 sq ft / 26.6 sq m
Store = 130 sq ft / 12.1 sq m
Total = 1452 sq ft / 134.9 sq m

For identification only - Not to scale



Floor plan produced in accordance with RICS Property Measurement Standards incorporating International Property Measurement Standards (IPMS2 Residential). © nichecom 2022. Produced for Simon Miller & Company. REF: 910609



Malling Office
777 London Road, Larkfield, Aylesford,
Kent, ME20 6DE

Contact
01732 875706
larkfieldsales@simonmiller.co.uk
<https://simonmiller.co.uk/>

Agents Note: Whilst every care has been taken to prepare these particulars, they are for guidance purposes only. All measurements are approximate and for general guidance purposes only and whilst every care has been taken to ensure accuracy, they should not be relied upon and potential buyers/tenants are advised to recheck the measurements.