



Lettings



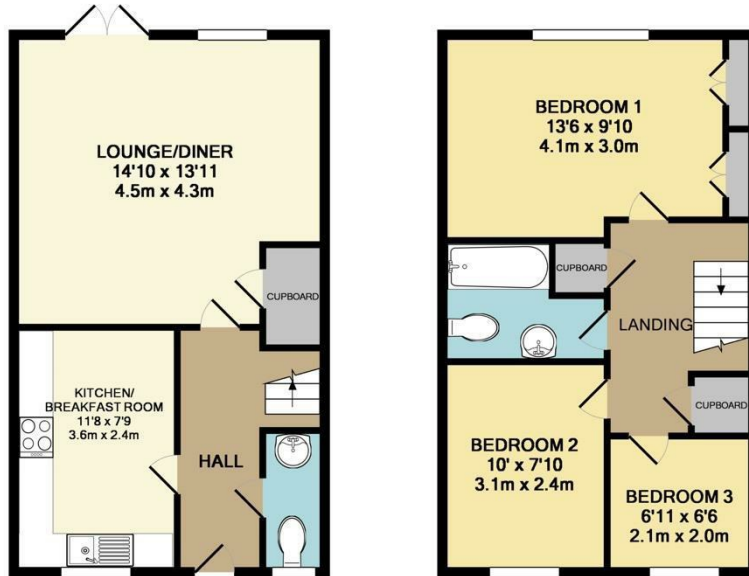
Cades Place

Barming, Kent ME16 0YG

- Unique Gated Development
 - Garage & Parking
 - Popular Location
 - Available Immediately
- Immaculately Presented Three Bedroom House
 - Downstairs Cloakroom
- Two Double Bedrooms - Further Single Bedroom

£1,200 PCM

Local Authority Maidstone
Borough Council
Council Tax Band D
EPC Rating C



GROUND FLOOR
APPROX. FLOOR
AREA 379 SQ.FT.
(35.2 SQ.M.)

1ST FLOOR
APPROX. FLOOR
AREA 379 SQ.FT.
(35.2 SQ.M.)

TOTAL APPROX. FLOOR AREA 758 SQ.FT. (70.4 SQ.M.)
Made with Metropix ©2018



Lettings Office

Lettings Division, 779 London Road,
Larkfield, Aylesford, Kent, ME20 6DE

Contact

01732 875777
lettings@simonmiller.co.uk
<https://simonmiller.co.uk/landlo/services/>

Agents Note: Whilst every care has been taken to prepare these particulars, they are for guidance purposes only. All measurements are approximate and for general guidance purposes only and whilst every care has been taken to ensure accuracy, they should not be relied upon and potential buyers/tenants are advised to recheck the measurements.